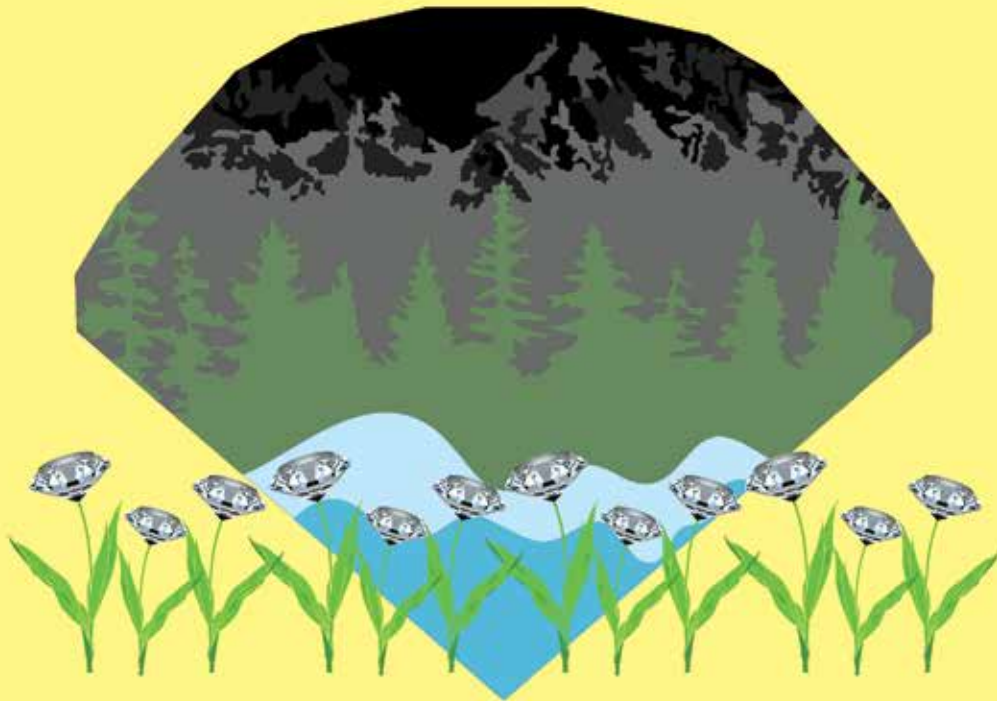


The Alberni District FALL FAIR PRESENTS:

# **A diamond in the rough!**



# **75<sup>th</sup> Anniversary**

**Better late than never**

September 8 - 11, 2022

# Contents

Welcome to the Fair.....	2
Attractions.....	3
Deadlines for Entries .....	5
Parade Entry Form.....	5
Fairly Amazing Race .....	7
4-H Classes.....	8
Livestock Entry Form.....	16
Open Livestock Classes .....	18
Home Arts Entry Form .....	23
Home Arts Classes .....	25
Special Awards .....	47

## Fall Fair Board of Directors

**President** Scott Green

**Vice President** Carol Brown

**Past President** Mitch Gardner

### Directors

**Agriculture** Dave Best

**Attractions** Jason Ferguson

**Buildings** Gary Ruissen

**Entertainment** Keith Gagnon

**Fair Services** Colleen Dods

**Grounds** Chad Hyggen

**Home Arts** Bill Brown

**Promotions** Kryssie Thomson

## Welcome to the ALBERNI DISTRICT 2022 FALL FAIR

The Alberni District Fall Fair Association respectfully acknowledges doing our business within the unceded territories or the Hupacasath and Tseshaht First Nations. We are excited to finally be able to celebrate 75th anniversary with a full fair in 2022 and picked our theme Diamonds in the Rough – “better late than never”.to be appropriate. We intend to showcase this celebration with the best of the Alberni Valley with new and traditional favorite attractions.

Our exhibitors are an integral part of the success of the fair. This year we have brought back some old exhibitor classes and are adding some new classes that are showing signs of rejuvenating and we have added a few new classes we thought our Home Arts Exhibitors would like to see. Enter online or in person.

We want to make our parade a celebration for the whole community to enjoy, so we have added some incentive prizes. If you are part of a group, organization, or an interested individual, please we encourage you to consider participating. What a great venue to promote yourselves.

Looking back in the history books the first fair was held in the Beaver Creek area but soon moved up to the present location when the Kinsmen Club were asked to take it over when all the local men went off to war. Till this day the Kinsmen and Kinettes have treated the fair as their main project. They along with other dedicated community minded individuals work diligently to bring you this beloved celebration each year.

The goals of the fair remain consistent to this day. To advance the interest in industrial, sporting, agriculture, and community activities. To use the proceeds from each fair for the purpose of promoting or assisting enterprise designed to advance the civic or community welfare.

We have made some changes to the lay out of the fairgrounds and added a few things so be sure to attend. Check out our website [www.albernifair.com](http://www.albernifair.com) for our online ticket system to purchase all your tickets including raffle, gate admissions and midway passes. As we celebrate our 75th fair, we remain the #1 destination for family entertainment in the Community.

***We hope to see you at this year's fair.  
September 8th – 11th 2022.***

**Contact Information**  
**Alberni District Fall Fair**  
**PO Box 32, Port Alberni V9Y 7M6**  
**Tel: 250 723-9313**  
**Email: [albernifair@shaw.ca](mailto:albernifair@shaw.ca)**  
**Website: [www.albernifair.com](http://www.albernifair.com)**

# Alberni District Fall Fair

September 8 - 11, 2022



**\$30,000**  
**RAFFLE CASH**  
**GIVE AWAY**

for more information go to:  
[www.albernifair.ca](http://www.albernifair.ca)

# 2022 ENTRY DEADLINES

**ALL ENTRY FORMS MUST TO INTO THE OFFICE  
BY THE FOLLOWING DATES:**

**HOME ARTS**  
August 26, 2022



**LIVESTOCK**  
August 26, 2022



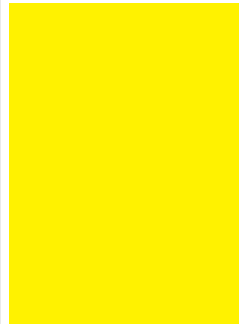
**HORSE SHOW**  
August 26, 2022



**PARADE**  
August 31, 2022



**FAIRLY  
AMAZING RACE**  
August 31, 2019



You can enter by mail, drop off at the fair office or go to our new online system  
[www.albernifair.com](http://www.albernifair.com)

## IT IS FAST AND EASY!

The Exhibits must to dropped off at the following days and times:

All hobbies, sewing, photography, amatuer art, wine & beer.

**TUESDAY, SEPTEMBER 6th from 1PM to 8PM**

All floriculture, horticulture, home cooking and other food categories.

**WEDNESDAY, SEPTEMBER 7th from 6PM to 8PM**

Livestock in place prior to:

**THURSDAY, SEPTEMBER 8th 5PM**

**PLEASE GET YOUR ENTRIES INTO THE OFFICE IN A TIMELY MANNER**





# FALL FAIR PARADE ENTRY FORM

**Parade Date: Saturday September 10, 2022**

**Entry Closing Date: August 31st**

Send entries to: [albernifair@shaw.ca](mailto:albernifair@shaw.ca) or Fax: 250 723-9391 or drop off at fair office  
Times: Marshaling begins at 8:30 am on day of parade, to ensure you will be judged please  
arrive by 9:00am. The parade starts at 11:00am sharp. Parade Route: Starting at  
Burde St. on 10th Ave and proceeding to Rosewood St. along 10th Ave.

**Please Print**

**Organizations Name:** \_\_\_\_\_

**Contact Name:** \_\_\_\_\_

**Email:** \_\_\_\_\_

**Phone Number:** \_\_\_\_\_ **Cell Number:** \_\_\_\_\_

**Tell Us about Your Entry** \_\_\_\_\_

\_\_\_\_\_

\_\_\_\_\_

**Judging category:** \_\_\_\_\_

**Length of Entry in feet** \_\_\_\_\_

**(including tow vehicle/trailer):**

## **Special Requirements:**

Publicity Information that will be shared with Shaw Cable for their  
commentary the day of the parade (attach a separate sheet if need be).

**I fully understand the rules and regulations for the Fall Fair Parade  
and accept responsibility for this entry.**

**Signed:** \_\_\_\_\_

**Dated:** \_\_\_\_\_



# FALL FAIR PARADE RULES AND REGULATIONS

- All entries must be registered
- Commercial entries: all businesses
- Non – Commercial – groups, marching bands, etc.
- All entries must be decorated in good taste
- Please respect the Parade Marshal and Marshaling Crew, they are all volunteers.
- Anyone using excessive foul language will be removed from the lineup.
- Anyone with alcohol, cannabis, including vaping at the parade staging area will have their entry removed from the lineup.
- No soliciting entries will be allowed. Any entries advocating, opposing or depicting any political or social issues are subject to the approval of the Parade Marshal.
- All vehicles must be in good mechanical condition and properly serviced prior to the parade. Special attention must be paid to cooling systems, exhaust systems, brakes, steering and tires. All units must carry a fire extinguisher.
- No persons shall ride on the hood, roof, trunk or door frame of an entry vehicle.
- All entries should leave appropriate space between themselves and the next entry (2 car lengths) nor too far apart (3 or more car lengths)
- All parade participants are forbidden from throwing candy or other items, however it may be given to spectators on the side lines.
- Persons must walk beside their entry when handing out any materials, and not intrude on other participants activities.
- Any entry with music must keep the volume to reasonable level so it does not intrude on other participants presentations.
- Position numbers will be given out at the corner of Anderson Avenue and Burde St. starting at 8:30am

## FALL FAIR PARADE ROUTE



# THE FAIRLY AMAZING RACE

## SPONSORED BY MEAGHAN AND GREG

Teams will participate in challenges located in all areas of the Fall Fair Grounds.

Challenges will be both timed challenges and race challenges.

Challenges will be based on our Fall Fair Theme, our community, agriculture, and our Fall Fair.

Event will take place Friday September 9, 2022, starting at 5:30pm

### WHO CAN PARTICIPATE?

- Teams of 4 people (maximum)
- Youth aged 12-18
- A maximum of 12 teams will be accepted, so register early!

### REGISTRATION:

- Anyone wanting to participate needs to gather their intended teammates and fill in a registration form before September 2nd, 2022. Drop off at the fair office or email to [albernifair@shaw.ca](mailto:albernifair@shaw.ca)
- There is no entry fee. Participants will be admitted to the Fair on the day of the race at no charge, providing they have pre-registered. Passes will be available for pickup at the Fair office on September 7, 2022.

### RULES AND REGULATIONS:

All challenges to be completed according to instructions. Failing to follow instructions may be cause for elimination.

### PRIZES: PRIZES WILL BE AWARDED AT THE END OF EACH COMPLETED STAGE

- Grand prizes will be awarded for the first and second place teams.
- First Prize \$300 cash, 4 ride passes, 4 gate admissions (total value over \$450)
- Second Prize \$100 cash, 4 ride passes, 4 gate admissions (total value over \$250)
- Each participant will receive a T shirt

### 2022 FAIRLY AMAZING RACE REGISTRATION FORM

Team Name: \_\_\_\_\_

Contact: \_\_\_\_\_

Address: \_\_\_\_\_

Cell #: \_\_\_\_\_

Email: \_\_\_\_\_

Team Mates: (4)

Age: \_\_\_\_\_

Age: \_\_\_\_\_

Age: \_\_\_\_\_

Age: \_\_\_\_\_

Return to: Alberni District Fall Fair

PO Box 32, Port Alberni V9Y 7M6

Fax: 250 723-9391 Email: [albernifair@shaw.ca](mailto:albernifair@shaw.ca)

# ALBERNI DISTRICT FALL FAIR 4-H DAY AT THE FAIR

**Saturday September 7, 2019**  
**4-H is represented in the Alberni Valley By:**

**Alberni 4-H Boots n Bridles Horse Club**

**Key Leader: Charlene Holden.....250.731-5740**

**Contact Leader: Charlene Holden .....250.731.5740**

## 4-H RULES & REGULATIONS

- Leaders & exhibiting members will be given wrist bands prior to arriving at the Fair once the Club entries have been put into the data base. **All parents and siblings etc. accompanying exhibiting members are eligible for a discounted rate, please check with your 4-H Club information package that will be sent out.**
- 4-H Entry closing date: August 27th, 2019. Please use the provided entry form.
- Livestock Projects to be on grounds before 5:00 pm Thursday of the Fair
- Non-Livestock Projects to be brought to office Sept. 3rd or 4th
- Open to all 4-H Clubs currently enrolled in the 4-H Program. No entry Fee.
- Judging will be done on the Danish System.
- All 4-H project rules and regulations will apply.
- All 4-H animals must have a 4-H ID number and correct id for their project animal.
- All 4-H Club leaders must carry a copy of all attending 4-H Club Members Parent Member Release form.
- Club members may enter animals in regular open classes, but must complete the open entry forms, and pay the entry fee by the closing date as indicated on the Livestock Entry Forms. 4-H members must show their own projects.
- 4-H animals will be stalled in the 4-H Sections.
- Any clipping or grooming of a 4-H animal at the fair **MUST** be done by the 4-H member.
- 4-H members/leaders are compelled to abide by the SADD Rules. Any violation of those rules will not be tolerated.
- All 4-H members are responsible for Stall duty. **S e e S e c t i o n 3 S - 0 1**
- Little Britches open classes will follow all 4-H classes.
- If you have a project not listed contact the office a judge will be found if warranted.

***Saturday Evening Pizza Dinner behind the 4-H Dairy  
Bar 6:00PM***





# 4-H CLASSES

## SECTION 3A – 01

### 4-H DAIRY

1. Junior Dairy Showmanship (9 – 11 years)
2. Intermediate Dairy Showmanship (12 – 14 years)
3. Senior Dairy Showmanship (15 and over years)

#### ***Champion Dairy Showman***

4. Unit I – Junior Heifer Calf (Dec. 1 to Feb. 28)
5. Unit I – Int. Heifer Calf (Sept to Nov. 30)
6. Unit I – Summer Yearling

#### ***Champion Dairy Calf Class***

7. Unit II – Yearling Calf
8. Unit III – Two Year Old Cow
- Champion Overall Dairy**
9. Inter Club

## SECTION 3B – 01

### 4-H BEEF

1. Junior Showmanship (9 – 11 years)
2. Intermediates Showmanship (12 – 14 years)
3. Senior Showmanship (15 years and older)

#### ***Champion Showmanship Class***

4. Beginners Beef Person (Unit I)
5. Young Market animal – maximum 10 months of age (Unit X)
6. Market Calf (Unit II) or Carcass Steer (Unit VI) under 1,100 lbs.
7. Market Calf (Unit II) or Carcass Steer (Unit VI) over 1,100 lbs.

#### ***Champion Market Class***

8. Young Heifer – Maximum 10 months of age (Unit Y)
9. Heifer (Unit III)

#### ***Champion Heifer Class***

10. Cow Calf (Unit IV) cow must be in calf or have calf at foot
11. Mature Cow Calf (Unit V)
- Champion Overall Beef**
12. Interclub Class

## SECTION 3C – 01

### 4-H SHEEP

- All 4-H members must show in their own classes
- Prize Money for Showmanship & Projects classes: 1st - \$10.00, 2nd - \$7.00, 3rd - \$5.00
- Prize Money for Interclub Classes:
  - \$10, \$8, \$6, \$4, \$2,
- Fitting Classes, Prize Money:
  - \$10, \$8, \$6, \$4, \$2,
- Inter Club – 4 animals constitutes a club entry, to be judged on type, handling, ability, fitness and ring procedures
- Rosettes for Championship Classes
- If there is a trophy, all winners are encouraged to have photos taken, but the trophies must be left at the fair

\$50.00 – 1st prize for overall Champion Ewe sponsored by the BC Purebred Sheep Breeders Association. Note: 4-H Leaders need to apply directly

1. Junior Showmanship (9 – 11 years)
2. Intermediate Showmanship (12 – 14 years)
3. Senior Showmanship (15 years and older)

#### ***Champion Showman***

4. Fed Lamb
5. Market Lamb

#### ***Champion Market Class***

6. Ewe Lamb – White Faced
7. Ewe Lamb – Black Faced
8. Ewe Lamb – Full Fleece

#### ***Champion Ewe Lamb Class***

9. Yearling Ewe – White Faced
10. Yearling Ewe – Black Face
11. Yearling Ewe – Full Fleeced

#### ***Champion Yearling Ewe Class***

12. Ewe, with Lamb at Foot
13. Grand Champion Ewe Overall
14. Interclub Class
15. Junior Sheep Fitting
16. Intermediate Sheep Fitting
17. Senior Sheep Fitting
18. Interclub Class

## SECTION 3D – 01

### 4-H SWINE

1. Junior Showmanship (9-11 years)
2. Intermediate Showmanship (12 – 14 years)
3. Senior Showmanship (15 years and older)

#### **Champion Showman**

4. Market Gilt or Barrow

#### **Champion Class**

5. Breeding Gilt
6. Yearling Sow
7. 2-year-old Sow
8. Sow with Litter

#### **Champion Class**

9. Interclub Class

## SECTION 3E – 01

### 4- H GOAT

1. Junior Showmanship (9 – 11 years)
2. Intermediate Showmanship (12 – 14 years)
3. Senior Showmanship (15 years and older)

#### **Champion Showman**

4. Kid Doe
5. Yearling Doe
6. Doe with Kids
7. Milking Doe

#### **Champion Class**

8. Chevon
9. Carcass
10. Pack Goat
11. Miniature Goat
12. Fibre Goat

#### **Overall Champion Goat**

13. Interclub Class

## SECTION 3F – 01

### 4- H RABBITS

1. Junior Rabbit Showmanship
2. Intermediate Rabbit Showmanship
3. Senior Rabbit Showmanship

#### **Champion Class**

4. Unit I Doe, Meat
5. Unit I Doe, Fancy
6. Unit I Doe Wool

#### **Champion Doe Class**

7. Unit I Buck, Meat
8. Unit I Buck Fancy
9. Unit I Buck, Wool

# 4-H CLASSES

## SECTION 3F – 01

### 4- H RABBITS

#### **Champion Buck Class**

10. 1 Unit II Doe with Litter
11. Unit III Meat Pen, Group of 3 rabbits, not over 70 days and not over 5 lbs (2.25kg)
12. Unit IV Replacement Stock – Doe
13. Unit IV replacement Stock – Buck

#### **Champion Best Overall Rabbit**

14. Inter Club Class – 4 animals constitute a club entry to be judged on type, handling ability, fitness and ring procedures.
15. Rabbit Fitting

## SECTION 3G – 01

### 4-H CAVY

1. Junior Showmanship (9-11 years)
2. Intermediate Showmanship (12 – 14 years)
3. Senior Showmanship (15 years and older)

#### **Champion Showman**

4. Unit I Cavy, Sow (short coat)
5. Unit II Cavy, Sow (long coat)

#### **Champion Sow Class**

6. Unit II Cavy, Boar
7. Unit II Cavy, Boar (long coat)

#### **Champion Class**

8. Unit II Sow with Litter ( 2 ½ to 5 ½ wks.)
9. Unit III Replacement Sow
10. Unit III Replacement Boar

#### **Best Overall Cavy**

11. Interclub Classes
12. Fitting Classes



# 4-H CLASSES

## SECTION 3H - 1

### 4-H POULTRY

1. Junior Showmanship (9 – 11 years)
2. Intermediate Showmanship (12 – 14 years)
3. Senior Showmanship (15 years and older)

#### **Champion Showman**

#### **Standards and Bantam Birds**

**Note: for Unit I & II trios please enter 2 females and 1 male for rural, 3 females for urban. Please specify breed, variety and size (STD or BTM)**

4. Unit I - Cockerel
5. Unit I - Pullet
6. Unit I - Trio (urban or rural)
7. Unit II - Young Cockerel
8. Unit II - Young Pullet
9. Unit II Trio (urban or rural)
10. Unit II - Hen with young
11. Unit III - 2 Trio's
12. Unit IV - a) Layer Hen
13. Unit IV - a) layer or Trio
14. Unit IV - b) Hatchery Cockerel (6-8 weeks)
15. Unit IV - b) hatchery Pullet (6 - 8 weeks)
16. Unit IV - Hatchery Trio (6 - 8 weeks)
17. Unit IV - c) meat Cockerel
18. Unit IV - c) Meat Pullet
19. Unit IV - cO Meat Trio
20. Unit V - a) Layer Hen
21. Unit V - a) Layer Trio
22. Unit V - a) Production Charts
23. Unit V - a) 3 doz eggs
24. Unit V - b) Meat Cockerel
25. Unit V - Meat Pullet
26. Unit V - Meat Trio
27. Unit V - b) Production Charts
28. Best Overall - Cockerel, Drake, Gander
29. Best Overall - Pullet, Duck, Goose Best
30. Overall Trio Hens - Ducks, Geese

**Note: for Trio's please enter 2 females and 1 male and specify breed, variety and size (STD or BTM)**

31. Unit I - Drake
32. Unit I - Duck
33. Unit I Pair or Trio Duck
34. Unit II - Young Drake
35. Young Duck

## SECTION 3H - 1

### 4-H POULTRY

36. Unit II - Duck with Ducklings
  37. Unit II - Young Pair or Trio (ducks)
  38. Unit IV - a) Layer Duck
  39. Unit IV - a) Layer Pair or Trio (ducks)
  40. Unit IV - b) Hatchery Drake (6 - 8 wks.)
  41. Unit IV - b) Hatchery Duck (6 -8 wks.)
  42. Unit IV - b) hatchery Trio (6-8 wks.)
  43. Unit IV - c) meat Drake
  44. Unit IV - c) meat Duck
  45. Unit IV - c) Meat Trio (ducks) goose
- Note: for trios please enter 2 females and 1 male, specify breed, variety, and size**
46. Unit I - Gander
  47. Unit I - Goose
  48. Unit I - Pair or Trio
  49. Unit I - Young Gander
  50. Unit II - Young Goose
  51. Unit II - Goose with Gosling
  52. Unit IV - a) Layer Goose
  53. Unit IV - a) Layer Pair or Trio
  54. Unit IV - b) Hatchery Cockerel (6-8 wks.)
  55. Unit IV - b) Hatchery Pullets (6 - 8 wks.)
  56. Unit IV - b) Hatchery Trio (6 - 8 wks.)
  57. Unit IV - c) Meat Cockerel
  58. Unit IV - c) Meat Pullet
  59. Unit IV - c) Meat Trio
  60. Interclub Class

## SECTION 3K - 01

### 4-H DOG

**Note: this class will be offered if enough interest is generated. 4-H Members must show their own project**

1. Junior Showmanship (9 – 11 years)
2. Intermediate Showmanship (12 – 14 years)
3. Senior Showmanship (15 years and older)

#### **Champion Showman**

4. Unit I Obedience
5. Unit II Obedience
6. Unit III Obedience

#### **Champion Obedience Class**

**Note: Please bring non -livestock projects Monday or Tuesday before the fair**

## SECTION 3L – 01

### 4-H OUTDOOR LIVING

1. Unit 1 – Wonderful World of Wildlife Display
2. Unit 1 – Record Book
3. Unit 2 – All Things Green Display
4. Unit 2 – Record Book
5. Unit 3 – Looking at the Sky and Weather Display
6. Unit 3 – Record Book
7. Unit 4 – Eye on the Environment
8. Unit 4 – Record Book
9. Unit 5 – Outdoor Survival
10. Unit 5 – Record Book
11. Unit 6 – Adventures in Wilderness Poster
12. Unit 6 – Record Book

## SECTION 5M – 01

### SEWING

Unit I – Sew On! Steady Stitches – member to complete 2 projects which include the 6 skill requirements for Unit I

1. Unit I – Project 1
2. Unit I – Project 2
3. Unit I – Record Book

Unit II – Sew On! Creative Construction – member to complete 2 projects with include 6 skill requirements for Unit II

4. Unit II, Project 1
5. Unit II, Project 2
6. Unit II, Record Book

Unit III – Sew On! The Personal Touch – members to complete 2 projects which include the 6 skill requirements for Unit III

7. Unit III – Project 1
8. Unit III – Project 2
9. Unit III – Record Book

## SECTION 3N – 01

### CRAFTS

Projects A-C must use a different technique

1. Unit I – Project A
2. Unit I – Project B
3. Unit I – Project C
4. Unit I – Record Book

Projects A- C must use a different technique

5. Unit II – Project A
6. Unit II – Project B
7. Unit II – Project C

# 4-H CLASSES

## SECTION 3N – 01

### CRAFTS

8. Unit II – Record Book

The member must design one article

9. Unit III – Project A
10. Unit III – Project B
11. Unit III – Project C
12. Unit III – Record Book

One motif is to be designed by member

13. Unit IV – Project B
14. Unit IV – Project C
15. Unit IV – Record Book

## SECTION 3P – 01

### 4-H CLOVER BUDS

1. Unit I – Scrapbook
2. Unit II – Scrapbook
3. Unit III – Scrapbook
4. Unit IV
5. Clover Bud Craft

## SECTION 3Q – 01

### 4-H SMALL ENGINES

1. Junior Small Engine Showmanship
2. Intermediate Small Engine Showmanship
3. Senior Small Engine Showmanship

#### **Champion showman**

4. Four Stroke Engine
5. Two Stroke Engine

## SECTION 3R – 01

### 4-H PHOTOGRAPHY

1. Unit I – Record Book
2. Unit I – Notebook
3. Unit I – Display of five 5"x7" mounted pictures
4. Unit II – Record Book
5. Unit II – Notebook
6. Unit II – Display of five 5"x 7" mounted pictures
7. Unit III – Record Book
8. Unit III – Notebook
9. Unit III – display of five 5"x7" mounted pictures



# 4-H CLASSES

## SECTION 3S – 01

### 4-H CLUB COMPETITIONS

- |                |            |
|----------------|------------|
| 1. Beef        | 5. Goat    |
| 2. Swine       | 6. Poultry |
| 3. Dairy       | 7. Sheep   |
| 4. Rabbit/Cavy | 8. Horse   |

Open to all 4-H Clubs entering in the 4-H Livestock Section. Judging commences at 7pm on Thursday to 4pm on Saturday. Club Leaders are asked to refrain from cleaning the stalls and animals. This is a 4-H members competition and not for parents and leaders. Judges will dock points for any club not doing their own work and may also dock points for not having a member present.

- a) Identification – each club to be identified by an appropriate sign. Further decoration is encouraged Points..... **15**
- b) Stalls – adequate bedding, cleanliness, neatness, and tidiness are expected ..... **35**
- c) Animals – tied properly, kept clean, and well groomed..... **20**
- d) Equipment and supplies – boxes kept tidy and out of alleyways. Supplies kept neat and orderly . **10**
- e) Exhibitors – courteous and polite to the public at all times. Members should be neat and their conduct above reproach ..... **20**

**Total Points = 100**

### 4-H EDUCATIONAL DISPLAY BOARDS—

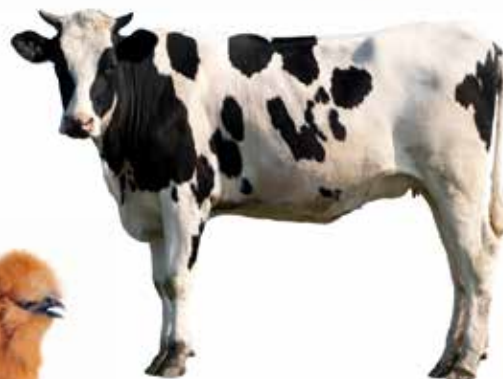
Open to 4-H clubs or individual 4-H members. Provincial 4-H regulations prevail. Prize Money: 1st - \$15, 2nd - \$10., 3rd - \$5.

- 9. 4-H Educational Display Board #1
- 10. 4-H Educational Display Board #2
- 11. 4-H Poster Competition
- 12. Farmer Bill's Interclub Challenge

**1ST PRIZE \$100**

**2ND PRIZE \$75**

**3RD PRIZE \$50**



# OPEN & 4-H HORSE SHOW SATURDAY, SEPTEMBER 10<sup>TH</sup>

## GYMKANA & BARREL RACING SUNDAY, SEPTEMBER 11<sup>TH</sup>

### ENTRY SECRETARY:

Charlene Holden Enquires: 250) 731-5740

Charlenemacdonald05@gmail.com

Entries to:

Alberni District Fall Fair

PO Box 32, Port Alberni V9Y 7M6

albernifair@shaw.ca

Approved helmets with fixed harnesses required  
for all mounted activities including lead line.

9AM START

Judge: TBA

All Divisions: \$40/day or \$5/class

Stalls: \$10 daily or \$20.00 overnight

Entrants must clean their stalls, around trailers,  
and remove all garbage. HCBC cards required. 4-H  
cards for 4-H members required.

4-H LEADER MUST BE IN ATTENDANCE

HORSE COUNCIL # IS MANDATORY

CLINIC: Judge TBA

ENTRIES DUE BY AUG 26, 2022,  
REFUNDS ONLY WITH VET OR DOCTORS NOTE

Online entry forms, class list, and fair rules can  
be viewed at [www.albernifair.com](http://www.albernifair.com)

### EXHIBITORS INFORMATION

Name: \_\_\_\_\_ Horse Council # \_\_\_\_\_

Mailing Address: \_\_\_\_\_ City: \_\_\_\_\_ Postal Code: \_\_\_\_\_

Horse Name: \_\_\_\_\_ 4-H Horse ID#: \_\_\_\_\_ 4-H Club: \_\_\_\_\_

Youth Birthdate: \_\_\_\_\_ Phone Number: \_\_\_\_\_ Email: \_\_\_\_\_

Leader(s) in attendance: \_\_\_\_\_

If you have a reserved back number, you are using enter the number here: \_\_\_\_\_

*(Please note that we cannot guarantee that "custom" back numbers will be produced; however, you are welcome to bring your own.)*

I make these entries at my own risk and have read completely and agree to be subject to the 2022 RULES  
AND REGULATIONS of the Alberni District Fall Fair Horse Show and I agree to be bound thereby.

Signature of Owner or Rider: \_\_\_\_\_

Signature of Parent/Guardian (if rider is under 18 years of age): \_\_\_\_\_

Date of Signature: \_\_\_\_/\_\_\_\_/\_\_\_\_  
D M Y

### STABLING REQUEST

- ☐ Friday Day Only
- ☐ Friday Overnight
- ☐ Saturday Overnight
- ☐ Saturday Day Only

### FEES

Unlimited Daily Classes: \$40/day or \$75 both days \_\_\_\_\_

Individual Classes: \$5/class \_\_\_\_\_

4H Classes: No Charge \_\_\_\_\_

Friday Clinic: \$40 \_\_\_\_\_

Stabling Cost (see above) \$30 \_\_\_\_\_

TOTAL: \_\_\_\_\_

**PLEASE ATTACH THE COMPLETED LIST OF ENTRIES  
OF BOTH THE HORSE SHOW AND GYMKANA TO THIS ENTRY FORM**

# 4-H AND OPEN HORSE SHOW

**SATURDAY SEPTEMBER 10TH – 9AM START**

Please check (✓) all classes entered

✓	#	CLASS	✓	#	CLASS
	1	4-H Mounted English level 1		34	Halter Geldings
	2	4-H Mounted English level 2		35	Halter Mare
	3	4-H Mounted English level 3		36	Showmanship Walk/Trot
	4	4-H Mounted level 4		37	Showmanship 13 and Under
	5	4-H Mounted level 5		38	Showmanship 14 to 18
	6	4-H Mounted English level 6 and up		39	Showmanship Senior
	7	English Pleasure JR W/T		40	Showmanship Open
	8	English Pleasure JR W/T	LUNCH		
	9	English Pleasure JR W/T		42	4-H Mounted Western level 1 (judges' pattern)
	10	English Pleasure 13 and under		43	4-H Mounted Western level 2
	11	English Pleasure 13 and under		44	4-H Mounted Western level 3
	12	English Pleasure 13 and under		45	4-H Mounted Western Level 4
	13	English Pleasure Open		46	4-H Mounted Western Level 5
	14	English Equitation JR W/T		47	4-H Mounted Western Level 6 and up
	15	English Eq 13 and under		48	Lead line (riders and handlers must wear helmets)
	16	English Eq 14-18		49	Western Pleasure STAKES - \$10 entry fee 50/30/20 split
	17	English Eq SR W/T		50	Western Pleasure JR W/J
	18	English Eq Open		51	Western Pleasure SR W/J
	19	Lead line		52	Western Pleasure 13 and under
	20	English Eq Senior		53	Western Pleasure 14-18
	21	Hunter Under Saddle Stakes - \$10 entry fee 50/30/20 split		54	Western Pleasure Senior
	22	Hunter Under Sad Sr. W/T		55	Western Pleasure Open
	23	Hunter Under Sad Sr. W/T		56	Horsemanship JR W/J
	24	Hunter Under Sad Sr. W/T		57	Horsemanship SR W/J
	25	Hunter Under Sad 14 - 18		58	Horsemanship 13 and under
	26	Hunter Under Sad Open		59	Horsemanship 14-18
	27	Versatility Class		60	Horsemanship Open
	28	4-H Fitting All Units		61	Trail 4-H
	29	4-H Dismounted level 1 (halter only)		62	Trail JR W/T
	30	4-H Dismounted level 2		63	Trail SR W/T
	31	4-H Dismounted level 3		64	Trail 13 and under
	32	4-H Dismounted level 4		65	Trail 14-18
	33	4-H Dismounted level 5 and up		66	Trail Open

# 2022 GYMKANA AND BARREL RACING

**SUNDAY SEPTEMBER 11TH – 9AM START**

Please check (✓) all classes entered

✓	#	CLASS	✓	#	CLASS
	1	Simon Says In Hand		34	Scurry Race Adult
	2	Simon Says Jr Walk/Trot		35	Pole Bending In Hand
	3	Simon Says Adult Walk/Trot		36	Pole Bending Jr Walk/Trot
	4	Simon Says Jr		37	Pole Bending Adult Walk/Trot
	5	Simon Says Sr		38	Pole Bending Jr
	6	Simon Says Adult		39	Pole Bending Sr
	7	Relay Race In Hand		40	Pole Bending Adult
	8	Relay Race Jr Walk/Trot		41	Keyhole In Hand
	9	Relay Race Adult Walk/Trot		42	Keyhole Jr Walk/Trot
	10	Relay Race Jr		43	Keyhole Adult Walk/Trot
	11	Relay Race Sr		44	Keyhole Jr
	12	Relay Race Adult		45	Keyhole Sr
	13	Lead Line Egg and Spoon		46	Keyhole Adult
	14	Lead Line Candy Race		47	Grooms Class
	15	Lead Line Barrel Race		48	Open Walk/Trot
	16	Flag Race in Hand		49	Open Walk/trot Sit-a-Five
	17	Flag Race Jr Walk/Trot		50	Open sit-a-Five
	18	Flag Race Adult Walk/Trot		51	Costume Class
	19	Flag Race Jr			
	20	Flag Race Sr			
	21	Flag Race Adult			
	22	Barrel Race in Hand			
	23	Barrel Race Open Walk/Trot			
	24	Barrel Race Pee Wee			
	25	Barrel Race Jr			
	26	Barrel Race Sr			
	27	Barrel Race Pen			
	28	<b>Willy Salisbury Memorial Barrel Race</b>			
	29	Scurry Race In Hand			
	30	Scurry Race Jr Walk/Trot			
	31	Scurry Race Adult Walk/Trot			
	32	Scurry Race Jr			
	33	Scurry Race Sr			

**Mailing Address: PO Box 32, Port Alberni BC V9Y 7M6**  
**Fax: 723.9391 or Email: [albernifair@shaw.ca](mailto:albernifair@shaw.ca)**

**BARNS ARE CLOSED AT 9PM**

***Use a Separate Entry Form for each person entering***  
***Please indicate if it is a 4-H project or only entered in open***  
***Subject To all RULES & REGULATIONS of the Alborni District Fall Fair***  
***Entry Fees must be paid before show***

[illegible]



# LIVESTOCK RULES & REGULATIONS

## ALL ANIMALS MUST BE PROPERLY IDENTIFIED WITH CANADIAN IDENTIFICATION PROGRAM

***\*NO SMOKING IN THE BARNS\****

***\*PLEASE KEEP ANIMALS OUT OF LOGGER SPORTS AREA AND MIDWAY\****

***\*\*\* NOTE REGULATIONS\*\*\****

- All animals entered for competition must be registered prior to show and entries are paid.
- Entry closing date is August 27, 2022.
- 4-H Members are welcome to show in all Open Livestock Classes.
- Stall space allotted as determined by the Barn Supervisor.
- The Alberni District Fall Fair reserves the right to refuse any animal that show evidence of contagious diseases or parasites. The Agriculture Director on advice of the Consultant Veterinarian is authorized to refuse animals that are not in apparent good health. Animals displaying unruly & unmanageable behavior will be asked to leave.
- All exhibits must be penned before 5pm on Thursday and may not be removed prior to 9pm Saturday without first applying to the Agriculture Director at time of entry. (Consideration will be given to exhibitors from the mainland). Failure to comply may result in forfeiture of prize money. Vehicles will be allowed on the grounds after the Fair closes at 11 pm. Animals must be removed from the barns by 10am Sunday.
- No overnight sleeping in the barns
- Exhibitors to display your Farm Name & Breed type at your pens. Exhibitors are to keep their stalls or pens neat and presentable.
- Insurance: it is suggested that exhibitors obtain public liability insurance to protect themselves. Consult our insurance broker.



# OPEN LIVESTOCK

## SECTION 1 – A

### DAIRY

**Entry Fee: \$8.50 per animal per class**

**Group Classes: \$8.50 per entry**

**Prize Money per class: 1st - \$85., 2nd - \$75., 3rd - \$60., 4th - \$40., 5th - \$20., 6th - \$10.**

Please read the General Livestock Rules

- All animals over 1 year of age must have neck ropes
- Best Udder Class in an interbreed
- Competition 1st and 2nd place animals in all Dairy Cow classes are required for this and prize money will be paid for 1st and 2nd places only (no entry fee)
- Senior yearling in milk will be shown as 2-year old's
- In the absence of competition in any classes or if the stock exhibited is of inferior quality the judge will award only such premiums as they deem the exhibit to merit.
- Except for group classes animals may be shown in ONE CLASS ONLY
- Dress Code: WHITE ONLY

BREEDS – **A** Jersey and Guernsey

**B** Ayrshire **C** Holstein

### BREED CLASSES

1. Female, Junior
2. Female, Intermediate Calf
3. Female, Senior Calf
4. **Grand and Reserve Champion – rosettes only**
5. Female, Junior Yearling
6. Female, Intermediate Yearling
7. Female, Senior Yearling
8. Female, 2 years and older
9. Get of Sire (3 females)
10. Breeders Herd (4 females)
11. Progeny of Dam
12. Best of Udder (no entry fee)
13. Veal

**Grand and Reserve Champion – rosettes only**

## SECTION 1 – B

### BEEF

**Entry Fee: \$8.50 per animal, per class.**

**Group Classes: \$8.50 per entry**

**Prize Money per class: 1st - \$85., 2nd - \$75., 3rd - \$60., 4th - \$40., 5th - \$20., 6th - \$10.**

Please read the General Livestock Rules

- BULLS except calves MUST have nose leaders in place and adequate staff for their control. All animals over one year of age must have neck ropes. Animals showing unruly or unmanageable behavior will be asked to leave.
- Except for group classes animals may be shown in ONLY ONE CLASS. Maximum entries per exhibitor 2 per class.
- In the absence of competition in any classes or if the stock exhibited is of inferior quality the judge will award only such premiums as they deem the exhibit to merit.
- When there is significant numbers – 4 per class of one breed – those animals will have their own breed class.
- ie: Class 5 Heifer Class – 9 animals in the class – 4 or more are Angus – they will have their own class.

### BREED CLASSES

1. Bull Calf
2. Junior Bull Yearling
3. Senior Bull Yearling
4. Bull 2 years old
5. **Grand and Reserve Champion – rosettes only**
5. Heifer Calf
6. Junior Heifer Yearling
7. Senior Heifer Yearling
8. 2-year-old Cow with or without calf
9. Mature Cow (over 2) with calf
10. **Grand and Reserve Champion – rosettes only**
10. Breeders herd – 4 females or 1 bull and 3 females over 1 year
11. Get of Sire – group of 3 animals sired by 1 REGISTERED BULL
12. Progeny of Dam
13. Market Steer – light
14. Market Steer – heavy
15. **Grand and Reserve Champion – rosettes only**

## SECTION 1- C

### SHEEP

**Entry Fee: \$6.00 per class**

**Group Classes: \$6.00 per entry**

**Prize Money per class: 1st - \$50., 2nd - \$40., 3rd - \$20., 4th - \$15., 5th - \$10., 6th - \$6.**

Please read General Livestock Rules ... take note of #8

- All entries (other than wool class) must be shown in short fleece, 1" staple maximum with a neat, clean and tidy appearance. Market animals must be slick shorn.
- Except for Breeds Flock or Get of Sire animals may be shown in ONE CLASS ONLY (eg: cannot show a lamb as a market lamb and then as a ewe lamb)
- Maximum entries per exhibitor two per class
- In the absence of competition in any classes or if the stock exhibited is of inferior quality the judge will award only such premiums as they deem the exhibit to merit.

1. Market Lamb Class – Lambs entered may be any breed or cross, Ewe or Wether (all market animals must have been castrated and slick shorn)
2. Ram Lamb -black face
3. Ram Lamb -white face
4. Ram Lamb -wool
5. Ram Lamb - hair
6. Ram Yearling or older -black face
7. Ram Yearling or older white face
8. Ram Yearling or older -wool
9. Ram Yearling or older - hair

**Grand and Reserve Cliampion -rosettes only**

10. Ewe Lamb -black face
11. Ewe Lamb -white face
12. Ewe Lamb -wool
13. Ewe Lamb - hair
14. Ewe Yearling -black face
15. Ewe Yearling -white face
16. Ewe Yearling -wool
17. Ewe Yearling - hair
18. Ewe -mature (2 years or older)

**Grand and Reserve Champion – rosettes only**

## SECTION 1- C

### SHEEP

19. Breeders Flock -Pen of 1 Ram, 3 Ewes

20. Get of Sire -A group of three animals, by the same sire, both sexes may be represented, full mouth milk teeth

21. Ewe with Lamb at Foot

**Grand and Reserve Cliampion -rosettes only**

## SECTION 1- D

### SWINE

**Entry Fee: \$6.00 per class**

**Group Classes: \$6.00 per entry**

**Prize Money per class: 1st - \$50., 2nd - \$40., 3rd - \$20., 4th - \$15., 5th - \$10., 6th - \$6.**

Please read General Livestock Rules ... take note of #8

- Swine need not be purebred
- Maximum entries per exhibitor 2 entries per class

### BREED CLASSES

1. Boar, one year and over, any breed
2. Boar, under 1 year, any breed

**Grand and Reserve Champion – rosettes only**

3. Breeding Gilt, any breed
4. Sow with litter of not less than 8, any breed

**Grand and Reserve Champion – rosettes only**

5. Market Hog
6. Pot Belly Pig -Boar
7. Pot Belly Pig - Kune Kuni
8. Pot Belly Pig -Gilt
9. Pot Belly Pig - Kune Kuni

**Grand and Reserve Champion – rosettes only**



# OPEN LIVESTOCK

## SECTION 1- E

### GOATS

**Entry Fee: \$6.00 per class**

**Group classes: \$6.00 per entry**

**Prize Money per class: 1st - \$50., 2nd - \$40., 3rd - \$20., 4th - \$15., 5th - \$10., 6th - \$6.**

Please read General Livestock Rules ...  
take note of #8

- Dress Code: WHITE ONLY
- Maximum entries per exhibitor, two per class
- In the absence of competition in any classes or if the stock exhibited is inferior quality, the judge will award only such premiums as they deem the exhibit merits
- Except for Group Classes animals may be shown in ONE CLASS ONLY (eg: cannot show a kid as a Chevon and as a Doe Kid)
- When there are significant numbers – 4 per class of one breed those animals will have their own breed class
- Class 2, Doe under one year- 9 animals in the class – 4 or more are Nigerian Dwarf – they will have their own class

### BREED CLASSES

1. Chevon – kids entered may be any breed or cross, kid doe or wether (all market animals must be castrated) may not be shown in any other class

**Grand and Reserve Champion – rosettes only**

2. Doe, under 1 year

**Grand and Reserve Champion – rosettes only**

3. Yearling, dry
4. Yearling, in milk

**Grand and Reserve Champion – rosettes only**

5. Senior Doe, dry
6. Senior Doe, in milk

**Grand and Reserve Champion – rosettes only**

7. Doe with Kid at Foot
8. Get of Sire – 3 does any age different Dams, same sire owned by exhibitor
9. Progeny of Dam

**Grand and Reserve Champion – rosettes only**

## SECTION 1- F

### RABBITS

**Entry Fees: \$2.50 per class**

**Prize Money per class:**

**1st - \$7., 2nd - \$5., 3rd - \$3.**

Please read General Livestock Rules ...  
take note of #8

- All entries must be in the showroom by 4pm on Thursday of fair
- All entries will be judged as entered, be sure to include breeds, variety, sex of the animals
- This is a carry cage show, all cages must be leak proof and labeled with the exhibitor's name, and breed of animal
- All exhibitors must supply their own cages for their animals
- Any animal showing signs of disease will be removed from the showroom
- Classes are limited to two (2) entries per exhibitor in each class
- Animals may show in one (1) class only
- In the absence of competition in any classes or if the stock is inferior quality the judge will award only such premiums as they deem the exhibit merits.

### BREED CLASSES

1. Commercial Buck
2. Commercial Doe
3. Wool Buck
4. Wool Doe
5. Fancy Buck
6. Fancy Doe
7. Commercial Trio
8. Doe with Litter

## SECTION 1 - L

### CAVY

See entry fees, prize money and regulations.  
Rabbit Section apply

### BREED CLASSES

1. Cavy – Sow with short hair
2. Cavy – Boar with short hair
3. Cavy – Sow with litter (short hair)  
3 to 6 weeks old
4. Cavy – Sow with long hair
5. Cavy – Boar with long hair
6. Cavy – Sow with litter (long hair)  
3 to 6 weeks old

**SECTION 1 – H - 01**

**STANDARD POULTRY**  
**BREED CLASSES**

1. Cock
2. Hen
3. Cockerel
4. Pullet
5. Old Trio
6. Young Trio
7. Urban Trio – 3 hens

**SECTION 1 – H - 02**

**BANTAM POULTRY**  
**BREED CLASSES**

1. Cock
2. Hen
3. Cockerel
4. Pullet
5. Old Trio
6. Young Trio
7. Young Trio

**SECTION 1 – H - 03**

**TURKEYS**  
**BREED CLASSES**

1. Cock
2. Hen
3. Old Trio
4. Young Trio

**SECTION 1-H - 04**

**DUCK**  
**BREED CLASSES**

1. Drake
2. Hen
3. Old Trio or Pair
4. Young Trio or Pair

**OPEN LIVESTOCK**

**SECTION 1-H - 05**

**GEESE**  
**BREED CLASSES**

1. Gander
2. Goose
3. Old Trio or Pair
4. Young Trio or Pair

**SECTION 1 – H -06**

**PIGEONS**  
**BREED CLASSES**

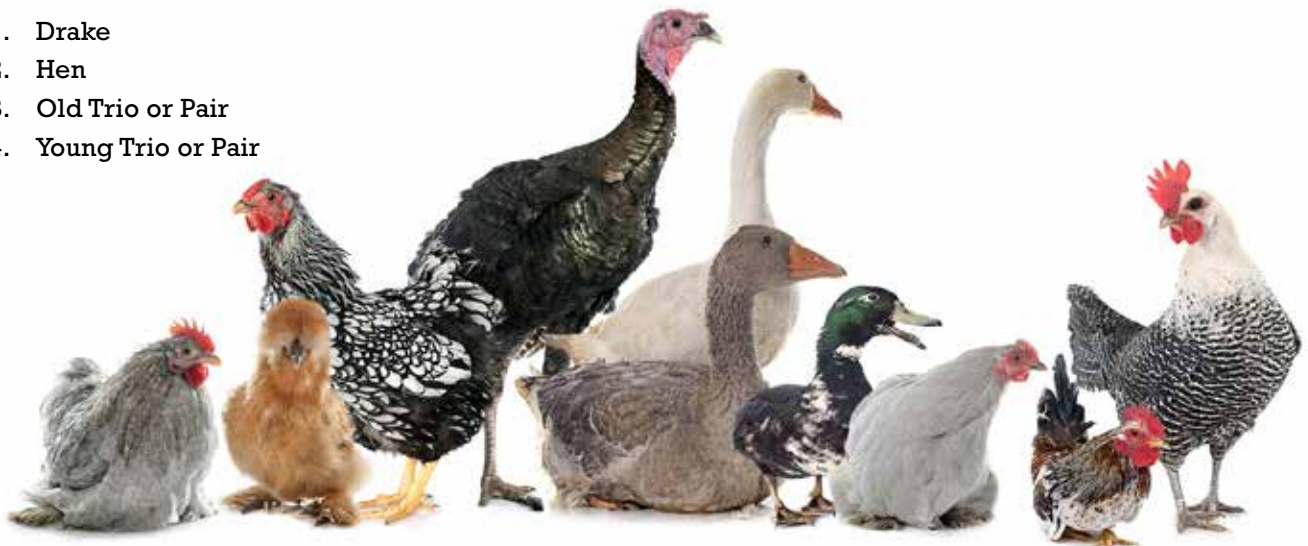
1. Old Cock banded
2. Old Hen banded
3. Young Cock banded
4. Young Hen banded

**SECTION 1 – H -07**

**EXOTIC**  
**BREED CLASSES**

Example: Pheasant, Quail, Peacocks

1. Cock
2. Hen
3. Pair
4. Old Trio
5. Young Trio





# OPEN LIVESTOCK

## SECTION 1 – H

### POULTRY

**Entry Fees for all classes: \$2.50**

**Prize Money for all classes: 1st - \$7., 2nd - \$5., 3rd - \$3.**

Please read the General Livestock Rules

- All entry forms must be complete with section, class breed, variety and total number of birds.
- Birds must be in showroom by 4pm on Thursday of fair
- Classes will be provided in both bantam and standards
- All birds must be classes of cock, hem, cockerel, pullet, old trio, young trio or urban trio. Birds in a pair or trio may also be entered individually even though they are housed in the same cage
- All birds will be judged according to the American Poultry Association "Standards of Perfection" Dubbing not required.
- No "bad looking" birds will be judged. Diseased birds, will not be allowed to remain on the grounds.
- All breeds will be judged separately
- Birds must be fed before showing
- Classes are limited to 3 entries per class up to 3 breeds per exhibitor
- In the absence of competition in any classes or if the stock exhibited is of inferior quality the judge will award the exhibit is inferior quality the judge will award the exhibit to merit

#### EXAMPLE OF HOW TO ENTER YOUR POULTRY TRIO'S

4-H	OPEN	SECTION	CLASS	NAME OF ANIMAL	BREED	REG #	TATTOO EAR TAG	BIRTHDATE	FEE
	✓	1H-01	1	BROOSTER	BUFF ORP	1			2.50
	✓	1H-01	2	SADIE	BUFF ORP	2			2.50
	✓	1H-01	2	SALLY	BUFF ORP	3			2.50
	✓	1H-01	5	B, S & S	BUFF ORP	1,2,3			2.50



# ALBERNI DISTRICT FALL FAIR ENTRY FORM

**Mailing Address: PO Box 32, Port Alberni BC V9Y 7M6**

**Fax: 723.9391 or Email: albernifair@shaw.ca**

**Note: Please use the separate entry form for all Livestock  
One Exhibitor per entry form. Entry fees must be paid prior to judging.**

## AGE CATEGORIES

**PJ** - Boys & Girls, 6 years & under

**J** - Boys & Girls, 7 to 10 yrs.

**PT** - Pre-teens, 11 to 14 yrs.

**T** - Teens, 15 to 18 yrs.

**OP** - Open, 19 years & over

**SC** - Seniors, 65 yrs. & over

**SN** - Special Needs

Name \_\_\_\_\_ Telephone \_\_\_\_\_

Address \_\_\_\_\_ E-Mail Address \_\_\_\_\_

Postal Code \_\_\_\_\_ Birthdate \_\_\_\_\_

**Would you like an email notice of when the prize book is ready yearly      Yes / No**

AGE	SECTION	DIVISION	CLASS	ENTRY FEE	DESCRIPTION OF ARTICAL
<i>OP</i>	<i>5K</i>	<i>8</i>	<i>13</i>	<i>\$1</i>	<i>Wall hanging, hand quilted</i>

**PLEASE NOTE;** entry forms must be mailed or dropped off at the Fall Fair Office on the Fairgrounds by the entry deadlines as indicated in the General Rules.

**If you are entering on of the feature classes i.e.: Best baked muffins or other, please indicate on the entry form.**

**PLEASE NOTE THE FOLLOWING TIMES TO BRING YOUR EXHIBITS:**

**Tuesday, Sept. 6, 2022, 1 PM – 8 PM – Wine, Honey, Needlecraft, Hobbies, Sewing, Photography, Amateur Art. All these entries will be judged on Wednesday morning and must be in place Tuesday night.**

**You may enter the following at this time or on Wednesday, Sept. 7, 2022, 6 PM – 8 PM – Home baking, floriculture and horticulture exhibits. Fresh flowers must be in place and ready for judging by 9 AM, Thursday Sept. 9, 2022**

# GENERAL RULES

**All entry forms must be submitted in person, by mail or email or through our online entry platform on our website: [www.albernifair.com](http://www.albernifair.com)**  
**DEADLINE FOR ALL ENTRY FORMS FOR ALL EXHIBITORS IS AUGUST 26, 2022**

**ABSOLUTELY NO LATE ENTRIES ACCEPTED**

## EXHIBIT DELIVERY AND PICK UP TIMES

**WINE, HONEY, BEER, NEEDLECRAFT, HOBBIES, PHOTOGRAPHY, AMATEUR ART**

**Tuesday Sept. 6, 2022 – 1PM to PM**

**HOME COOKING, FLORICULTURE AND HORTICULTURE**

**Wednesday September 7, 2022 – 6PM to 8PM**

**LIVESTOCK**

**Thursday September 8, 2022 – prior to 5PM**

- **Entry Fees:** All entries are subject to entry fees listed as follows: All classes \$1.00, except where indicated different in the class description
- Age Categories: Boys & girls under 6 - PJ; Boys & girls 7 to 10 years - J; Pre-Teens 11 to 14 years - PT; Teens 15 to 18 years - T; Open 19 years and over; Seniors 65 years and over - S; Special Needs - SN
- All ages may enter all classes unless specified differently. Entries will have been grouped into age categories (see above)
- All PJ and J age categories will receive a participant's ribbon
- No prize will be awarded for any item that has been previously awarded at the fair.
- When there is only one entry in a class the exhibit must be first class standard to receive 1st place.
- It is the responsibility of each exhibitor to enter the correct class. If any entry is obviously in the wrong category the Convener in charge of each area will make the changes.
- No person will be allowed to enter more than one exhibit in any class, except where specified. In no case will more than one prize be awarded to an exhibitor in any class.
- All articles on exhibition must be the bona fide property of an made or raised by the exhibitor.
- If the judge deems an exhibit unworthy of a prize, they may withhold the award. Where competition is absent or limited, the judge may make awards accordingly to the merits of the exhibits as in in competition.
- No person shall be allowed to engage the judge in conversation or otherwise hinder him/her in their work during the time the exhibits are being judged.
- Prize money less than \$10.00 owing not picked up from the fair office, will be treated as a donation to the fair
- Vouchers for merchandise offered as prizes must be presented to the donor within one month after date received, otherwise it will be forfeited.
- All exhibitors must report to the Fair Office to pick up their tags and receipts before proceeding to designated building to drop off exhibits. All tags must always be left on the exhibits while in the exhibit hall.
- Any protests must be in writing to the Fall Fair Administrator.
- The Fall Fair Board of Directors will not be held responsible for any loss or damage to exhibits. Security is provided overnight for all buildings.
- The Fall Fair Board of Directors reserves the right to enforce any rule which lends to the betterment of the show.
- All service vehicles must be off the grounds by opening time each day.
- 1st - \$5., 2nd - \$3., 3rd - \$1.

**Non-Livestock Prize Money will be paid at the Fair Office during the following hours:**

**Friday Sept. 9, 2022 from 3pm to 9pm**

**Saturday Sept. 10, 2022 from 10am to 4pm and 7pm and 9pm**

**Sunday Sept. 11, 2022 from 10am to 5pm**

**Livestock Pay Out:  
8pm on Saturday Sept. 10, 2022**

*Note: please present your receipt at the time of prize money pick-up.*

*Admission at the gates on Sunday is in effect until 3:30pm*

## SECTION 5A

### GRASSES, GRAINS, FODDER PLANTS—

1. Orchard Grasses, 2" diameter at tie
2. Clover, 3" diameter at tie
3. Timothy, 2" diameter at tie
4. Alfalfa, 3" diameter at tie
5. Any other variety named
6. Silage corn, 3 stalks
7. 1 lb. transparent plastic bag silage
8. Sunflower, 3 stalks
9. Barley, 3" diameter at base of heads
10. Oats, 3" diameter at base of heads
11. Wheat, (fall) 3" diameter at base of heads
12. Wheat (spring) 3" diameter at base of heads
13. Field peas, 3" diameter at tie
14. 50lb bale of mixed hay
15. 50lb bale of any other variety to be named
16. Rye, 3" diameter at the head

## SECTION 5B

### FRUITS

- *All fruits must be shown in natural state and not polished except for apples and*
  - *Pears and should be named*
  - *All fruits will be judged according to the Standards of Perfection as issued by the BC Ministry of Agriculture*
  - *AOV – Any other variety, please name the variety*
1. Apples, Macintosh, Red, 5
  2. Apples, Wealthy, 5
  3. Apples, Delicious, 5
  4. Apples, King, 5
  5. Apples, Northern Spy, 5
  6. Apples, Green, 5
  7. Apples, Jonathan, 5
  8. Apples, Duchess, 5
  9. Apples, Transparent, 5
  10. Apples, Crimson Beauty, 5
  11. Apples, Gravenstein, 5
  12. Apples, other varieties named, 5
  13. Blackberries, plate of 12
  14. Boysenberries, plate of 12
  15. Strawberries, plate of 12
  16. Raspberries, plate of 12
  17. Any other berry not named above, plate of 12
  18. Crab Apples, Hyslop, 12
  19. Crab Apples snow, 12
  20. Grapes, Green mature, 2 bunches
  21. Grapes, concord, 2 bunches
  22. Grapes, Seedless, 2 bunches
  23. Nuts, Filberts, 12
  24. Nuts, Walnuts, 12
  25. Pears, Bartlett, 5

## HORTICULTURE & FLORICULTURE

## SECTION 5B

### FRUITS

26. Pears, Anjou, 5
27. Pears, Flemish Beauty, 5
28. Pears, other variety named, 5
29. Plums, Peach, 12
30. Plums, Greengage, 12
31. Plums, Bradshaw, 12
32. Plums, Sampson, 12
33. Plums, Gold, 12
34. Plums, other varieties named, 12
35. Prunes, Italian, 12
36. Prunes, French, 12
37. Peaches, 5
38. Nectarines, 5
39. Watermelon, 1
40. A collection of fruits, 8 varieties named
41. Most unusual fruit display, grown inside a bottle
42. Any other

## SECTION 5C

### HORTICULTURE GENERAL

- *All produce must be grown by the exhibitor*
  - *Entries will be judged by Standard of Perfection as issued by the BC Ministry of Agriculture*
  - *All beans, peas must have stems attached*
  - *All stalks of beets, carrots, parsnips, should be cut to 1" of stalk*
1. Beans, Bush, wax, 6 pods
  2. Beans, Scarlet Runner, 6 pods
  3. Beans, Broad or Windsor, 6 pods
  4. Beans, pole or climbing, 6 pods
  5. Beans, bush, 6 pods
  6. Beets, cylindrical, 5 roots
  7. Beets, 5 roots
  8. Beets, pickling, 5 roots
  9. Broccoli, 2 heads
  10. Brussel Sprouts, 12 sprouts
  11. Cabbage, green large, with outer leaves, 2
  12. Cabbage, red with outer leaves, 2
  13. Cabbage, Savoy, 2 heads
  14. Carrots, Ox heart, short, under 4", 5
  15. Carrots, intermediate, 4" – 6", 5
  16. Carrots, long, 6" and over, 5
  17. Carrots, white, 5
  18. Carrots, any other colour, 5
  19. Cauliflower, 2 heads
  20. Celery, 2 heads
  21. Citron, 2 each

## SECTION 5C

### HORTICULTURE GENERAL

22. Corn, (to be stripped), 6 ears
23. Cucumber, Long English, 2
24. Cucumber, dill, 4", 6
25. Cucumber, pickling, (2-3"), 6
26. Lemon Cucumbers, 2
27. Garden Cucumbers, 2
28. Eggplants, 3
29. Exotic Vegetable
30. Garlic, hardneck, purple stripe, 4 bulbs any variety
31. Garlic, hardneck, Rocambole, 4 bulbs, variety named
32. Garlic, hardneck, porcelain, 4 bulbs, variety named
33. Garlic, softneck, 4 bulbs, any variety named
34. Garlic, Elephant, 4 bulbs
35. Garlic, other, 4 bulbs
36. Kale, 2 heads
37. Kohlrabi, (3"), 3 heads
38. Leeks, 3
39. Lettuce, Head, 2 heads
40. Lettuce, Romaine, 2 heads
41. Lettuce, Endive, 2 heads
42. Muskmelon, 2 each
43. Green onions, 6
44. Onion, yellow or brown (up to 3"), 5
45. Onions, large (over 4"), 5
46. Onions, Multipliers, 12 each
47. Onions, pickling, (approx ..7 5"), 12
48. Parsley, 1 bunch with 12 stems
49. Parsnips, 3 roots
50. Peas, 6 pods
51. Peppers, Bell, green, 3 with stems
52. Peppers, Bell, red, 3 with stems
53. Peppers, Bell, yellow, 3 stems
54. Peppers, Cayenne, 3 with stems
55. Peppers, Habanero, 3 with stems
56. Peppers, any other, 3 with stems
57. Potatoes, Russet , 5
58. Potatoes, Norland, 5
59. Potatoes, Pontiac, 5
60. Potatoes, early variety, named, 5
61. Potatoes, late variety, named, 5
62. Best display of freak potatoes (1- 6"), no toothpicks

## SECTION 5C

### HORTICULTURE GENERAL

63. Pumpkins, pie or sugar, 2
64. Field Pumpkin, grooved stems, (heaviest)
65. Field Pumpkins, (heaviest)
66. Giant Atlantic Pumpkin
67. Pumpkins, smallest, 2
68. Radishes, (bunched with tops and roots) 12 each
69. Rhubarb, 5 stalks
70. Squash, Acorn, 2
71. Squash, Butternut, 2
72. Squash, Hubbard, golden, 2
73. Squash, Hubbard, green, 2
74. Squash, heaviest, 2
75. Squash, Patty Pan, 2
76. Squash, Spaghetti
77. Swiss Chard, 2 heads
78. Tomatoes, green stems attached, 5
79. Tomatoes, red, stems attached, 5
80. Tomatoes, yellow, stems attached 5
81. Tomatoes, Cherry, attached, 12
82. Tomatillos, 5
83. Turnips, summer, (approx. 5") 3
84. Turnips, swede (approx. 5") 3
85. Zucchini
86. Any other Vegetable
87. Vegetable Sculpture person, animal or imaginative object made from a new vegetable
88. Garden Display, 3" x3", at least 7 varieties, named
89. Collection of fresh herbs, 5 kinds named, displayed in water
90. Roots Cellar Collection, exhibited in a suitable container, ie: washtub, wooden box, 4 varieties, 2 of each. named





## SECTION 5D

### FLORICULTURE

- *Note: Note: see general rules regarding set up times*
- *Exhibitors may enter more than one entry class, providing each entry is a different class*
- *No placing of flowers while the judges are in the building*

## SECTION 5D - 01

### GLADIOLI

1. Single, with foliage
2. Three spikes, 3 different colours
3. Three spikes, one colour



## SECTION 5D- 02

### DAHLIAS

1. Single bloom, over 3"
2. Single bloom, under 3"
3. Two blooms, one variety, over 3"
4. Two blooms, one variety, under 3"
5. Three blooms, CVA over 3"
6. Three blooms, CVA 3" and under

## SECTION 5D- 03

### OTHER CUT FLOWERS

1. Antirrhinum (snapdragons) 6 spikes
2. Asters, single, 5 blooms, any colour
3. Asters, double blooms, 5 blooms in one vase, CVA
4. Bachelor Buttons, 5 blooms NEW
5. Carnations, 6 blooms
6. Chrysanthemums, dis budded, 1 bloom, any colour
7. Hydrangea, 1 stem
8. Lily, variety named, 1 stem
9. Marigolds, dwarf French, 9 blooms, any one variety, in 1 vase
10. Nasturtium, 5 blooms
11. Pansies, 6 blooms, 1 vase CVA
12. Petunias, single, 6 blooms, 1 vase CVA
13. Petunias, double, 6 blooms, 1 vase CVA
14. Roadside flower arrangement, 1 species
15. Rose, hybrid tea, 6 blooms to a bowl, CVA
16. Rose, hybrid tea, 1 bloom any colour
17. Roses, polyanthus, 3 cuts, in 1 vase CVA
18. Stocks, 6 stems, in 1 vase CVA
19. Sweet Peas, 10 stems, 5 each, of 2 varieties
20. Sweet Peas, 12 stems, mixed, 1 vase
21. Zinnias, 9 blooms, permilla (cut and come again) in 1 vase
22. Zinnias, 5 blooms, large, 1 vase
23. Any cut flower not named, vase of 4 blooms
24. Cut flowers, arranged in unusual container
25. One vase, any cut flower not listed above

# HORTICULTURE & FLORICULTURE

## SECTION 5D-04

### POTTED PLANTS

1. Pot of Herbs
2. One pot flowering
3. African Violets, one pot
4. One pot of foliage
5. One pot of ferns, (not asparagus ferns)
6. One pot of cactus
7. One pot of succulents
8. One flowering tuberous Begonia
9. One hanging basket, foliage
10. One hanging basket, flowering
11. Collection of house plants flowering or foliage, mix is allowed, 6 to 9 pots
12. Collection of house plants, cactus 6 to 9 pots
13. Plant grown in an unusual container, not large



## SECTION 5 D- 05

### MISCELLANEOUS

1. Table center, under 6" high
2. Table center, from 6-12" high
3. Terrariums
4. Dried plant materials, grasses, or seed pods, one container to be judged for number of varieties and artistic arrangement
5. Dried flower arrangement as #4 using materials such as grasses, or seed pods
6. Fairy Garden, not bigger than 10cm by 50cm
7. Sweeter than wine flower arrangement in a wine bottle
8. Tom Thumb miniature flower arrangement



## SECTION 5G – 01

### GROUPS

All entry fees: \$3.00 per class

Prize Money for all classes:

1st - \$15.00, 2nd - \$10.00 3rd - \$7.00

1. 8"x 8" space allotted.
2. Must be grown by the exhibitor(s).
3. The display must consist of 10 horticulture and floriculture products including 2 varieties of potatoes, 1 fruit, flowers, grains or farm products may be included.



**MOST POINTS IN HOME COOKING TROPHY  
BEST ENTRY IN HOME BAKING TROPHY**

**SECTION 5E – 01**

**BREADS, BUNS & MUFFINS**

1. White Bread, ½ loaf
2. White Bread Maker, ½ loaf
3. Brown Bread, ½ loaf
4. Brown Bread maker, ½ loaf
5. Fruit Bread, ½ loaf
6. Fruit Bread maker, ½ loaf
7. Swedish tea Ring, ½ loaf
8. Milk Rolls, 2 of uniform size
9. Cinnamon buns, 2 of uniform size
10. Muffins, 2 plain or bran
11. Muffins, 2 with fruit
12. Muffins, any other
13. Baking Powder Biscuits, 2 of uniform size
14. Scones, 2 of uniform size
15. Lemon Loaf, ½ loaf
16. Zucchini loaf, ½ loaf
17. Banana Bread, ½ loaf
18. Loaf, other than above, ½ loaf.

**SECTION 5E – 02**

**CAKES & COOKIES**

1. White, single layered cake, iced or frosted 3"x3" square or pie shaped piece
2. Chocolate, double layer pie shaped piece
3. 2 of each,
4. Angle Food Cake, not iced, ½ cake
5. Cup Cakes, 2 judged on decoration only
6. Fruit Cake, dark or light, ½ loaf, recipe included
7. Chocolate brownies, 2 pieces, 2"x2"
8. Matrimonial Cake, raisin or date, 2 pieces 2"x2"
9. Rolled Cookies, 2 kinds, 2 each
10. Dropped Cookies, not pressed, 3 kinds, 2 each
11. Shortbread, 2 pieces, or ½ cake
12. Plate of fancy cookies, 3 kinds, 2 each
13. Non-bake cookie, 1 kind, 2 each
14. Non-bake square; i.e.: rice krispies, 2 each
15. Packed lunch box snack,
16. Giant Decorated cookie, 1 only edible decorations,
17. Gluten-Free Cookies, 2 kinds, 2 of each,
18. Sugar-Free or Sugar alternative, cookies 2 kinds, 2 of each,
19. Specialty Baking ie: recipes made with organic products, or other, including recipe with entry,
20. Any other.

**SECTION 5E – 03**

**PASTRY**

*All pie entries, 2 slices only on a white pa-per plate, wrapped in plastic wrap*

1. Apple Pie, 2 crusts,
2. Raisin Pie, 2 crusts,
3. Pumpkin Pie,
4. Wild berry Pie, (blackberry, Salmon berry)
5. Fruit/berry Pie,
6. Lemon Meringue Pie,
7. Butter Tarts, 2,
8. Variety of tarts, 3 kinds, 2 of each
9. Any Other.

**SECTION 5E – 04**

**SPECIALTY**

1. "My Picnic Basket" – A picnic lunch for 2 Served in a basket. Should be nutritious, environmentally friendly and appetizing.
2. Decorated Cake, to be judged on the theme of the fair and presentation only, inedible accessories allowed
3. Dainties on a Doily. – A plate of at least 3 various kinds of dainties that would be served to guests. To be judged on appearance, taste, texture, of dainties, as well as overall creativity, and presentation.
4. Special Sandwich – sandwiches don't have to be made out of bread. Served on a plate may include garnishes, to be judged on nutritional value and presentation.

**SECTION 5E – 05**

**CANDY**

1. Chocolate fudge, 4 pieces (no nuts)
2. Peanut brittle, 4 pieces
3. Homemade candy, 4 pieces
4. Popcorn –Coloured, 2 cup bowl
5. Popcorn – Carmel, 2 cup bowl
6. Granola Snack Mix
7. Any Other
8. Maple fudge, 4 pieces



## HOME COOKING, CANNING, WINE, BEER & HONEY

### SECTION 5E – 06

#### FOR MEN ONLY CHALLENGE

All entry fees: \$1.

Prize Money for all classes:

1st.....\$15

2nd.....\$10.

3rd.....\$15.

*Each competitor will be allowed only one entry per class.*

*See General Rules for Home Cooking.*

1. Favorite Bread Recipe, traditional methods ½ loaf, must include recipe
2. Favorite Bread Recipe, bread maker, ½ loaf, must include recipe
3. Any other i.e. muffins, 2 each or specialty loaves, ½ loaf, must include the recipe.

### SECTION 5E – 07

#### INDIGENOUS FOOD SOURCES

*Rules for Entering.*

*You need not be a Indigenous to enter.*

*Each competitor will be allowed only one entry per class.*

*See General Rules for Home Cooking.*

1. Deer Meat Dried
2. Elk Meat Dried
3. Moose Meat Dried
4. Dried Salmon (specify)
5. Smoked Salmon (see S-5F-01)
6. Canned Native Fruit and Berries
7. Dried Mushrooms (specify)
8. Baked Bannock
9. Fried Bannock
10. A collection of no less than 5 Native Medicine Items (specify and uses).



### SECTION 5E – 08

#### EASY BAKE OVEN

*Rules: Open to all those in the J (boys and girls 7-10)*

1. Two items using easy bake oven

The same entry fees, prize money and rules as Baking apply in Section 5F.



#### MOST POINTS IN CANNING TROPHY BERNARDIN BEST IN SHOW AWARD

### SECTION 5F – 01

#### CANNING

1. Apple sauce, 1 jar any size
2. Fruit syrup, 1 jar any size, named
3. Fruit, 3 varieties, 1 jar any size
4. Fruit, 1 jar any size
5. Fruit jelly, 2 varieties, any size
6. Fruit jelly, 1 jar any size
7. Fruit jam, 2 varieties, any size
8. Fruit jam, 1 jar any size
9. Vegetables, 3 varieties, 1 jar each
10. Vegetables, 1 jar
11. Exotic vegetables, 1 jar
12. Canned soup, 1 jar any size
13. Minced meat, 1 jar any size
14. Chili sauce, 1 jar any size
15. Meat, 1 jar any size
16. Chicken, 1 jar any size
17. Fish, 1 jar any size
18. Canned smoked salmon, 1 jar any size
19. Sweet pickles, 1 jar any size
20. Pickled beets, 1 jar any size

## SECTION 5F – 01

### CANNING

21. Pickled onions, 1 jar any size
22. Mixed mustard pickles, 1 jar any size
23. Cucumber relish, 1 jar any size
24. Other relish; 1 jar any size
25. Homemade mustard, 1 jar any size
26. Pickled garlic, 1 jar any size
27. Pickled beans, 1 jar any size
28. Pickled carrots, 1 jar any size
29. Pickled Eggs, 1 jar
30. Salsa, 1 jar
31. Antipasto, 1 jar
32. Any other variety of pickles, 1 jar
33. Vinegar, fruit or herb, 1 jar named **NEW**
34. Emergency Dinner, consisting of 5 home canned items, either all quarts or all pints, which would make a complete dinner
35. Bernardin Gift Pack
36. Any other item not mentioned above

## SECTION 5F – 01

### BERNARDIN HOME CANNING CONTEST

*All entrants into contests must submit entries that are made using the sponsor's products. Entries are judged on appearance, texture, and creativity of recipe and presentation.*

All first-place winners from Robin Hood and Crisco & Bernardin Gift Pack competitions contests are eligible to have their name entered into a National Contest. The Alberni District Fall Fair will enter those names unless instructed differently from the exhibitor when prizes are picked up. First place nationally \$100 Gift Certificates.

- Bernardin Best in Show Award - 1st prize \$30.00 Gift Certificate plus Rosette Ribbon
- Bernardin Jam/Jelly Award - 1st prize \$20.00 Gift Certificate plus Rosette Ribbon
- Bernardin Gift Pack Competition - 1st prize \$20.00 Gift Certificate plus Rosette Prize Ribbon
- Bernardin SNAP lids®/Mason Jar Creative Craft Award - 1st prize \$20.00 Gift Certificate plus Rosette Prize Ribbon

**WWW.BERNARDIN.CA**

## HOME COOKING, CANNING, WINE, BEER & HONEY



## SECTION 5F – 02

### EGGS

1. Duck eggs, 12
2. Eggs, grade A large, white, 12
3. Eggs, grade A large, brown, 12
4. Eggs, bantam, 12
5. Exotic eggs, 2 kinds, 4 each

## SECTION 5F – 03

### SPECIALTY

1. Cream, hand skimmed, 5 pints
2. Homemade laundry soap, 2 bars
3. Homemade hand soap, 2 bars
4. Homemade candles
5. Homemade lotions

## SECTION 5F – 04

### DEHYDRATED

1. Sundried fruits, 6 pieces
2. Sundried vegetables, 6 pieces
3. Dehydrated fruit, 6 pieces
4. Dehydrated vegetables, 6 pieces
5. Fruit leather, 2"x4" pieces rolled, 2 pieces
6. Dehydrated herbs
7. Dehydrated beef or turkey jerky

**MOST POINTS IN WINE & BEER TROPHY**

**SECTION 5G – 01**

**WINE, BEER & LIQUEURS**

- *All wines must be made by the exhibitor by the process of fermentation.*
  - *Maximum of 3 entries per exhibitor In each class; each entry of different ingredients, or in the case of grapes, of different varieties. Please name.*
  - *All entries will be grouped and judged by ages as follows:*
    - » *Open, 19 years and over – O*
    - » *Senior Citizen, 65 years and over –SC*
1. **RED WINE, DRY GRAPE:** A red wine to be consumed with food. This wine is usually free of residual sugar, although A well balanced and aged wine will have some glycerin and soft- ness that could be mistaken for sweetness
  2. **RED WINE, DRY TO MEDIUM, NON-GRAPE:**  
A red wine to be consumed with without food. The sugar content may be from dry to medium but not excessively sweet. Any non-grape product that will produce a red wine
  3. **WHITE WINE, DRY, GRAPE:** A white wine to be consumed with food. This wine is usually free of residual sugar; it will vary from dry to off dry
  4. **WHITE WINE, DRY TO MEDIUM, NON-GRAPE:**  
A white wine to be consumed with or without food. The sugar content may be from dry to medium, but not excessively sweet. Any non-grape product that will produce a clear golden colour is acceptable. This wine should have a definite fruit aroma
  5. **WHITE WINE, MEDIUM, GRAPE:** A white wine to be consumed with or without food. Primarily a social style wine Sugar content can vary from off dry to slightly sweet as found in some German style wines.
  6. **ROSE WINE, GRAPE:** A light refreshing dry to off dry, patio style wine with grape variety characteristics. colour may range from pale to light red, and orange tinge is acceptable
  7. **ROSE WINE, NON-GRAPE:** A light refreshing dry to medium wine with definite fruit flavoured aromas. Colour may range from pale pink to light red, an orange tinge is acceptable
  8. **SPARKLING WINE:** A wine that can be consumed alone or with food. Wines sparkled by the method champenoise will have a distinctive yeasty flavor, while those made by the carbonation method tend to have fruitier characteristics. Sugar content may be from dry to sweet with a wide spectrum of colour. Sediment is not acceptable. No restriction on contents, but grapes are preferred
  9. **MISCELLANEOU SWEET WINE NOT FORTIFIED:** A wine consumed with dessert course of a Meal. This wine should be sweet and luscious with sufficient acid to keep it from Being cloying. There should be no astringency and the alcohol developed by fermentation. No Restriction on contents with the except that NO FORTIFICATION is allowed for this class
  10. **SHERRY (FORTIFIED):** This class is intended for the dry to not too sweet Sherry, Madeira and other related types of wines. No restriction on content
  11. **PORT (FORTIFIED):** This class of wine is usually sweet and meant to be consumed with nuts, cheese or fruit cake after dinner in place of liqueur
  12. **LIQUEUR:** A sweetened alcohol Beverage, no restrictions on contents,





SECTION 5G – 02

**BEERS, CIDERS & COOLERS**

1. **CIDER:** As apple or pear-based sparkling beverage. Should be well balanced with no oxidation colourless to golden, dry to semi-sweet, with 4 to 6 % alcohol
2. **PALE BEER, ALE/LAGER:** Colour may be straw to golden but not amber. There should be a good hop aroma with malt in balance with bitterness. Examples: are Blond lager, Pale or Light Ale and Bitter Ales
3. **AMBER BEER, ALE/LAGER:** Colour may be from light amber to dark amber with copper tone. Medium to full body, medium to high hop bitterness and medium to assertive aroma. Some styles are English Old Ale, Dark Ale, Indian, American style ales
4. **DARK BEER, ALE/LAGER:** Colour may be dark amber to dark brown with red to copper tones. Dry to sweet and generally smoother, heavier body and more flavorful than pale beers, Examples: Dark Lager, Brown Ales, Mile Ale and Porter
5. **STOUT:** Colour may be from very dark Brown or black. Full flavored with smooth finish. Dry to sweet, medium to high hops. Examples: Russian Imperial Stout, Guinness, and Murphy's
6. **COOLERS and OTHERS.**

SECTION 5G – 03

**HONEY**

*Exhibits of honey, wax and granulated honey must be the product of the Exhibitor. Honey combs should be wrapped in transparent protective covering.*

1. Liquid Honey, white,
2. Liquid Honey, golden,
3. Liquid Honey, amber,
4. Honey Comb, 1 shallow frame,
5. Honey Comb, 1 standard deep frame,
6. Honey Comb, 4 Sections (plastic or wood),
7. Chunk Honey, 3 jars,
8. Granulated Honey, 3 jars.

SECTION 5G – 04

**LARGE LEAF MAPLE SYRUP**

1. Light Coloured Maple Syrup,
2. Medium Coloured Maple Syrup,
3. Dark Coloured Maple Syrup



# NEEDLECRAFT

## MOST POINTS IN NEEDLECRAFT PLAQUE

- No prize money will be awarded for any article that has been awarded at previous Fairs.
- Articles soiled or defaced by wear will not be judged
- When there is only one entry in the class the articles must be first class standards to be awarded the prize

## SCORE CARD FOR CLOTHING

### General Appearance (40 points)

**Neatness:** is the article clean, well pressed ..... 10

**Design:** is the design suitable to material and kind of garment ..... 10

**Colour:** is the colour pleasing and appropriate..... 10

**Trimming:** is the trimming suitable to the garment ..... 10

### Material (15 points)

**Suitability:** is the material a good choice for the article ..... 5

**Harmony:** do fabrics, thread and trimming harmonize..... 5

**Quality:** is the quality suitable for the purpose..... 5

### Workmanship (60 points)

Cutting: is the cutting accurate ..... 10

Sewing: is the stitching straight with well adjusted tension and suitable length in stitches ..... 10

Are seams even width and suitable to material used..... 10

Are hems, bindings, and facing smooth? Do they lie flat and are they even in width? ..... 10

Are seams finishes, hem etc. properly and neatly done..... 10

Are buttons properly sewn on: button holes, zippers, pockets, etc., properly and neatly made ..... 10



**SEWING****Infant and children's sizes**

1. Baby outfit, minimum 2 pieces
2. Christening gown
3. Skirt
4. Blouse or shirt
5. Pants, overalls or shorts
6. Casual type dress
7. Semi – formal type dress
8. Sleepwear
9. Coat, jacket or outerwear
10. Outfit coordinated
11. Themed wear apparel ie: Halloween, dance etc.
12. Any other article not mentioned above

**Adult Sizes:**

13. Apron
14. Ladies, blouse or top
15. Ladies, pants or shorts
16. Skirt
17. Dress
18. Formal gown or dress outfit
19. Coat or jacket
20. Suit, minimum or 2 pieces
21. Sleepwear or other lounge wear
22. Vest
23. Men's shirt
24. Men's pants or shorts
25. hat or accessory
26. themed wearing apparel, Halloween or dance
27. Ethnic wearing apparel, any size
28. School project, clothing
29. School project, non-clothing
30. Purse or bag
31. Pillow or cushion
32. Stuffed toy or animal
33. Stuffed doll
34. Doll clothes, displayed on doll
35. Practical household article
36. Decorative household article
37. Tree ornaments, set of 3
38. Christmas stocking
39. Christmas tree skirt
40. Pot holder, 1 only
41. 41. Fidget Blanket **NEW**
42. 42. Produce Bags **NEW**
43. 43. Pet wear **NEW**
44. 44. Any other article not mentioned above

## SECTION 5K – 02

**KNIT-FABRIC**

1. Slacks or shorts
2. T-shirt or sweatshirt
3. Top
4. Bathing suit
5. Lingerie
6. Polar fleece garment
7. Hat or small accessory
8. Any other article not mentioned above

**NEEDLECRAFT**

## SECTION 5K – 03

**CROCHETING-WITH-COTTON**

1. Original design
2. Bedspread
3. Tablecloth, under 36"
4. Tablecloth, 36" and over
5. Dresser or table runner
6. Dresser Set, 3 pieces
7. Doily 8" to 12"
8. Doily 13" to 24"
9. Doily 25" to 36"
10. Edging on any article, ie: pillowcases
11. Cushion or pillow
12. Doll clothes, minimum 2 articles on doll
13. Snowflakes, set of 3
14. Tree ornaments, set of 3 crocheted
15. Seasonal decoration
16. Tatting, any item
17. Tatting, edging
18. Bobbin lace edging, mounted
19. Bobbin lace, motif or bookmark
20. Crocheted item with other needlework technique
21. Any other article not mentioned above

## SECTION 5K-04

**CROCHETING-WITH-YARN****Infants size up to 1 year**

1. Baby set, 3 or more pieces
2. Baby sweater or dress
3. Baby shawl or blanket
4. Booties or bonnet

**Children's Size**

5. Sweater
6. Dress
7. Slippers
8. Accessory ie: toque or scarf

**Adult Sizes**

9. Sweater
10. Vest or shell
11. Cardigan
12. Slippers.
13. Accessory ie: hat, mitts etc.

**Miscellaneous**

14. Afghan or bedspread
15. Cushion or pillow
16. Potholders or dishcloths, set of 2
17. Bag
18. Doll or toy
19. Doll outfit, on doll
20. Any crocheted item, original design
21. Collection of 4 different types of crocheted articles, ie: slippers, hats, mitts, sweater

# NEEDLECRAFT

## SECTION 5K – 05

### KNITTING

#### *Infant up to 1 year*

1. Baby set, 3 or more pieces
2. Sweater only
3. Booties or bonnet
4. Baby blanket
5. Dress, fine yarn
6. Dress, any yarn
7. Hat/Toque
8. Socks
9. Sweater, plain, stocking stitch
10. Sweater, figure or animals
11. Sweater, fancy stitch
12. Sweater, or vest, fairisle
13. Sweater, heavy yarn, plain
14. Sweater, heavy yarn, fancy design

#### *Children 2 to 10 years*

15. Sweater, plain stocking stitch
16. Sweater, figure or animals
17. Sweater, fancy stitch
18. Sweater, or vest, fairisle
19. Sweater, heavy yarn, plain
20. Sweater, heavy yarn, fancy design
21. Socks, plain knit
22. Socks, patterned or textured or colourwork
23. Dress, fine yarn
24. Dress, any yarn
25. Matching toque or scarf or mitts minimum of 2 pieces
26. Hat/Toque
27. Scarf/Cowl
28. Any other

#### *Adult Sizes*

29. Sweater, fine yarn, plain
30. Sweater, fine yarn, patterned ex: fairisle
31. Sweater, fine yarn, textured ex: cable
32. Sweater, medium to bulky yarn plain
33. Sweater, medium to bulky yarn, patterned
34. Sweater, medium to bulky yarn, textured
35. Sweater, knit from homespun yarn
36. Sweater own design
37. Matching toque or scarf or mitts minimum of 2 pieces
38. Hat/Toque
39. Mitts/Gloves
40. Scarf/Cowl
41. Socks, plain knit
42. Socks, patterned or textured or colourwork
43. Shawl, fine yarn
44. Shawl, any yarn
45. Any other

#### *Miscellaneous*

46. Slippers, any size

## SECTION 5K – 05

### KNITTING

47. Afghan or bedspread, fine weight yarn
48. Afghan or bedspread, medium weight yarn
49. Pillow or cushion
50. Doll outfit on a doll
51. Doll or toy
52. Potholder or dishcloth or kitchen towel, set of 2
53. Seasonal decoration
54. Tree ornaments, set of 3
55. Collection of 4 different types of knitted articles ex: slippers, toque, cowl, sweater etc.
56. Arm/Finger knitting, 1 item **NEW**
57. Any other

#### *Machine Knitting*

58. Children's wear, standard
59. Children's wear, bulky
60. Adult wear, standard
61. Adult wear, bulky
62. Afghan or bedspread
63. Any other

#### *Loom Knitting*

64. Toque
65. Scarf or Cowl
66. Afghan or Bedspread
67. Any other

#### *Knitted Felting*

68. Felted Slippers
69. Felted hat
70. Felted bag
71. Any other

## SECTION 5K- 06

### NEEDLEWORK

1. Pillowslips, embroidered, 1 pair
2. Dresser Set, embroidered, 3 pieces
3. Tablecloth, embroidered, 36"x54"
4. Tablecloth, embroidered, over 54"
5. Embroidered picture, under 12"
6. Embroidered picture, 12" and over
7. Embroidered item original design
8. Embroidery item not previously mentioned
9. Shadow embroidery, any article
10. Cutwork embroidery, any article
11. Brazilian embroidery, any article
12. Ribbon embroidery, any article
13. Crewel embroidery, any article
14. Machine embroidery, any article
15. Crewel work, using wool only
16. Smocking
17. Redwork
18. Seasonal embroidery
19. Embroidery ornaments, set of 3
20. Needlework picture



## SECTION 5K- 06

### NEEDLEWORK

21. Petit point
22. Plastic canvas, any article
23. Plastic canvas, ornaments, set of 3
24. Hardanger, small item
25. Hardanger, large item
26. Counted cross stitch, design under 14"
27. Counted cross stitch, design 14" and over
28. Counted cross stitch, ornaments, set of 3
29. Counted bead work
30. Combination counted cross stitch together with any other needlework technique
31. Unframed cross stitch
32. Any other form of needlework
33. Collection of 4 different needlework items
34. Swedish weaving, large item ie: afghan
35. Swedish weaving, small item ie: placemat
36. Swedish weaving, any other
37. Needle felted article **NEW**
38. Needle felted 2D article **NEW**
39. Needle felted 3D article **NEW**



## SECTION 5K – 07

### WEAVING AND SPINNING

1. Garment
2. Item not made up to maximum width 24"  
ie: scarf, blanket, etc.
3. Item not made up minimum width 24"  
ie: shawl, blanket etc.
4. Item made up ie: garment, cushion etc.
5. Wall hanging, tapestry or rug
6. Woven band or braided cord  
ie: inkle card weaving etc.
7. Item of handmade felt  
(non-woven or felled fabric, woven or knitted)
8. Basket, any technique any material  
ie: reed, pine needles, willows etc.
9. Rag Weaving, the "rags" may be from new or recycled fabric
10. Item for beginner (someone who has been weaving for one year or less)
11. Any item not mentioned above
12. Spinning, single ply yarn
13. Spinning, two ply yarns
14. Spinning, other fibre
15. Spinning, fancy yarn, any fibre or combination
16. 1 Yarn dyeing, commercial dye
17. 1 Yarn dyeing, natural dye (label)
18. Any item not mentioned above



# NEEDLECRAFT

## SECTION 5K – 08

### QUILTING

*Note: Quilts in classes 1 to 7 must be a minimum size of 60" x 72"*

1. Quilt, pieced, work of one person
2. Quilt, appliqued by machine, machine quilted, work of one person
3. Quilt, appliqued, machine quilted, work of one person
4. Quilt, machine quilted, work of one person
5. Quilt, hand quilted, work of one person
6. Quilt, work of one person, combination of techniques
7. Quilt, rag work of one person
8. Quilt, done by more than one person, but not by a organized group or organization
9. Quilt, made by an organized group or organization

#### Prize Money for Class 8

**1st.....\$15.00**

**2nd.....\$10.00**

**3rd.....\$5.00**

10. Quilt, commercially quilted
11. Lap or crib quilt, from a panel
12. Lap or crib quilt, hand quilted
13. Lap or crib quilt, machine quilted
14. Lap or crib quilt, commercially quilted
15. Lap or crib quilt, rag
16. Lap or crib quilt or wall hanging done by more than one person but not by a organized group or organization
17. Wall hanging, hand quilted
18. Wall hanging, machine quilted
19. Wall hanging, appliqued
20. Wall hanging, stained glass
21. Wall hanging, paper pieced
22. Wall hanging, embroidered, and or beaded, commercial design, work of one person

## SECTION 5K – 08

### QUILTING

23. Wall hanging, embroidered and or beaded, designed by individual, work of one person
24. Holiday, seasonal boutique ie: tree sldrt, stocldngs etc.
25. Home boutique ie: placemats, potholders (minimum of 2), table runner etc.
26. Pillow, hand quilted, not from a panel
27. Pillow, machine quilted, not from a panel
28. Crazy quilt, any size
29. Quilt, paper pieced, any size
30. Any quilt made with re-cycled materials (state origin)
31. . Quilt, original design
32. Quilted clothing, must be quilted
33. Quilt or wall hanging, miniature
34. Fibre Art wall hanging
35. Machine quilted purse or bag
36. A quilt block, 12"x12" square, not quilted, mounted and affixed on one edge **NEW**
37. A hand sewn quilt block, 12"x12" square, mounted and affixed on one edge **NEW**
38. A machine sewn quilt block, 12"x12" square, ~~mounted~~ mounted on one edge **NEW**
39. A paper-pieced quilt block, 12"x12" square, mounted and affixed on one edge **NEW**
40. A appliqué quilt block, 12" x12" square, mounted and affixed on one edge **NEW**
41. Special Feature Item - page 47
42. Any other quilted article not mentioned

## SECTION 5K – 09

### INDIGENOUS HAND SEWN GARMENT

*Note: you do not need to be of Indigenous to enter*

1. Item made of Leather
2. Item made of Buckskin
3. Item made with natural fibre – cedar
4. Item made with natural fibre, ie: silver willow
5. Machine sewn blanket, decorated ie: buttons, applique, beads, etc.
6. Machine sewn garment representing indigenous design





## SECTION 5L – 01

### CLAYWORK & SCULPTURE

1. Ceramics, glaze for utility use
2. Ceramics, glaze for decorative use
3. Ceramics, stained, decorative use
4. Ceramics, tree ornaments, set of 3
5. Porcelain doll
6. Pottery, any hand-built piece
7. Pottery, any piece of sculpture
8. Pottery, decoration, glaze, design etc.
9. School project
10. Sculpture, playdough or plasticine
11. Dough tree ornaments, set of 3
12. Fimo or Polymer clay object
13. Any other item not mentioned above

## SECTION 5L – 02

### WOOD CRAFT

1. Wood carving, 3D sculpture
2. Wood carving, wall plaque etc.
3. Indigenous wood carving less than 30 cm
4. Indigenous wood carving over 30 cm to max. of 60 cm
5. Wood turning
6. Wood inlay
7. Wood marquetry
8. Scroll saw fretwork
9. Item made from a burl
10. Furniture
11. Wooden toy, puzzle or game
12. Wooden toy, with moving parts
13. Mini reproduction, car, ship models
14. Natural wood shape, finished
15. Birdhouse -functional
16. Birdhouse -decorative
17. Dollhouse
18. Dollhouse furniture
19. Christmas tree ornaments, set of 3
20. Twig Art, 1 item, chair, trellis etc.
21. Item made from Cedar Bark -specify
22. Wood burning item
23. Wooden stick construction
24. Traditional tool or weapon
25. Wooden construction from a kit
26. School Project
27. Extra-large woodcraft item
28. Hiking Walking Stick **NEW**
29. Any wood project not mentioned above

## SECTION 5L – 03

### ROCK WORK

1. Hand cut
2. Polished
3. Unpolished
4. Stone jewelry – 3 pieces
5. Stone carving

## HOBBIES & CRAFTS

6. Rock Critter
7. Rock & Gem collection
8. Mosaic stepping stone
9. Any item not mentioned above

## SECTION 5L -04

### DECORATIVE PAINTING

1. Glass item
2. Metal item
3. Small wood item up to 12"
4. Large wood item 12" and over
5. Mandela Rock painted item **NEW**
6. Claypot
7. Seasonal item
8. Tree ornament -set of 3
9. Wearable item, fabric
10. Decorative item, fabric
11. Silk painting
12. Stenciled article
13. Batik, any item
14. Painted ceramic tile  
(minimum 6"x6" and up to 12"x12")
15. Diamond Painting
16. Any item not mentioned above.

## SECTION 5L – 05

### MODELS

1. Any plastic or resin model from a kit
2. Model scene, not building blocks 12"x12", securely mounted
3. Remote control model
4. Powered model
5. Rocket model
6. Model collection of 3 items
7. Miniature reproduction, any or mixed

## SECTION 5L – 06

### COLLECTIONS

*Limited to 2 feet square and must be securely mounted.  
Items 6,7,8 are open to non-Indigenous as well.*

1. Memento, or souvenir collection
2. Book, form, cards, coins, stamps
3. Doll or stuffed animals, maximum of 6
4. From nature ie: leaves, insects
5. Collectibles, minimum of 6
6. Indigenous traditional tools and weapons – wood
7. Indigenous traditional tools and weapons – stone
8. Any other Indigenous item

# HOBBIES & CRAFTS

## SECTION 5L – 07

### FLOWER CRAFT

1. Artificial bouquet in a vase
2. Dried flower or artificial saw or wreath
3. Dried flower arrangement 12" and under
4. Dried flower arrangement 12" and over
5. Artificial arrangement, 12" and under
6. Artificial arrangement, 12" and over
7. Artificial corsage or boutonniere
8. Pressed flowers any article
9. Artificial arrangement for dining
10. Artificial arrangement for dining "theme of the fair"
11. Any item not mentioned above

## SECTION 5L – 08

### NOVELTY

1. Fabric covered photo album or picture frame or similar
2. Mod Podge Item
3. Create an ugly Christmas Sweater **NEW**
4. Beaded craft
5. Beaded tree ornament -set of 3
6. Jewelry, any item
7. Felt tree ornament, set of 3
8. Dream catcher
9. String Art
10. "A Warm Welcome" something to adorn your door
11. Lawn ornament
12. Clay pot creation
13. Molded candle, poured
14. Beeswax candle, rolled
15. Dyed egg
16. Decorated egg
17. Fridge magnet
18. Father Christmas, under 16"
19. Father Christmas, 16" and over
20. Christmas wall hanging
21. Macrame - jewelry **NEW**
22. Macrame - plant hanger **NEW**
23. Macrame - wall hanging **NEW**
24. Puppet
25. Wind Chime
26. Gift Basket -design & build a gift basket for any occasion. Basket may contain purchased items
27. Christmas tree ornaments, any medium
28. Wreath, maximum of 12" in diameter, made from recycled materials
29. Table Center -Christmas theme
30. Decorative or functional craft made using Bernardin mason jar(s) or SNAP/lids

## SECTION 5L – 08

### NOVELTY

31. Something useful from something useless **NEW**
32. Any item not mentioned above

## SECTION 5L – 09

### PAPER CRAFT

1. Paper Mache
2. Paper tole
3. Paper cast item
4. Handmade paper item
5. Paper plate art
6. Decoupage
7. T-bag folding or origami type card
8. Embossed card
9. Embellishment on a card
10. Stamped greeting card
11. Handmade calendar
12. Computer calendar
13. Paper airplane
14. School project
15. Educational Display
16. Vision Board ex: a collage of recipe cards, goals, decorations **NEW**
17. Any item not mentioned above
18. 2022 Special Feature Item

## SECTION 5L – 09

### HOBBIES FEATURE ITEM

#### ***Class 18 Story Board***

The exhibitor will create a story board depicting a farm activity using any medium, such as paint, sewing, embellishments, mixed media. The exhibitor would then provide the written story that they have created. The story board may be made of cardboard, felt, or any other medium. The story board should be no more than 14" x 20" in size.

## SECTION 5L – 10

### GLASS WORK

1. Suncatcher
2. Stained glass, lead cane
3. Stained glass, copper cane
4. Etched
5. Free standing figure
6. Lampshade
7. Box shaped ie: tray, terrarium, etc.
8. Recycled materials, article using glass
9. Any item not mentioned above

## SECTION 5L - 11

### METAL WORK

1. Functional
2. Ornamental
3. Metal punch, any article
4. Windchime
5. Assembled art – sculpture
6. Recycled
7. School project
8. Any item not mentioned above



## SECTION 5L - 12

### SCRAPBOOKING

1. Themed scrapbook
2. Non-themed scrapbook
3. Creative scrapbook or photo album approx. 5'x7"
4. Creative scrapbook or photo album approx. 8"x11"
5. Single memory page layout
6. Memory pages, no more than 2 pages any theme
7. A scrapbook depicting "your family heritage"
8. Any item not mentioned above



## SECTION 5L - 13

### LEGO OR LEGO LIKE MODELS

1. Lego or Lego like, 1 article no kits
2. Lego or Lego like, model scenery not exceeding 1ft x 1ft, not a kit
3. Lego original, "theme of the fair"
4. Any construction type, mechanical, not a kit
5. Any other construction type, non-mechanical, not a kit
6. Lego, over 1ft. in size, not a ldt
7. Lego, over 1ft in size, kits and original combined
8. Diorama scene with action figures



## SECTION 5L - 14

### DUCT TAPE CHALLENGE

1. Any item made with 80% duct tape, or similar product, one or more colours. One item per exhibitor.

#### Prize Money:

1st - \$25.00

2nd - \$10.00

3rd - \$5.00



# PHOTOGRAPHY

## **BEST ENTRY PHOTOGRAPHY**

### ***Rules and Regulations for entry***

- Open to Amateur photography only
- The photographs must be taken by title exhibitor and be suitable for family viewing
- Note: See general rules for entry deadlines, prize money etc.
- One entry per class only
- All pictures must be securely mounted on BLACK mat board no thicker than 1/8"
- All others will be disqualified. This is to make title display area more consistent and easier to hang pictures.
- Snapshots only up to 6"x6" and no smaller than 4"x6"
- Must be willing if need be to sign a disclaimer for photographs with people
- Work of making the prints and mounting need not be the work of the exhibitor
- On the back of each mount in the lower right-hand corner must be printed: class name, and name of exhibitor, prints may be named
- All possible care for the prints will be taken, but the Fall Fair Board will not be held responsible for loss or damage
- The decision of the judges must be that captures or stops motion as its considered final
- Pictures may have been taken previously, but the print must have been made this past year.
- Honourable mentions may be awarded at the discretion of the judge
- All ages may enter all classes unless specified differently but will be judged according to age categories. See General Rules

## **SCORE CARD FOR PHOTOGRAPHY**

**Originality** ..... 50

**Composition, colour**..... 30

**Technique**..... 20

**To a total of 100 points**





## SECTION 5M-01

1. Photo Story - A series of 3 photos mounted on one mat
2. School Project
3. Panorama camera photo
4. People -any photo with people as the main subject ie: candid, portraits, children
5. Nature -Wild animals and or plants, and other natural phenomena
6. Domestic Animals -Pets and or farm animals including zoo and aquarium animals with or without human interaction
7. Domestic Plants -All plants grown or cultivated by humans ie: flowers, fruit, vegetables
8. Sports -Any photo that captures motion at a sporting event as its main subject
9. Action -Any photo that captures or stops motion as its main subject
10. Landscape/Seascape -Any photo that includes mountains, meadows, fields, and trees
11. Sunrise/Sunsets/Skies/Moons -Any photo with dramatic clouds and coloured skies, rainbows, captivated horizons, the moons etc.
12. Abstract -Any abstract photo is left to the imagination, a subject as it would appear naturally, but depicts that subject through shape, form, colour, texture and pattern. Computer enhancement is permissible.
13. Macro/Closeup -Any subject matter up close, usually of very small subjects. The finished photograph of the subject is greater than life size
14. Black and White/ Monochrome-Any subject that has been photographed or post processed in black and white sepia or monochrome tones
15. Still Life
16. City Scape
17. Photographic representation of our community, incorporating many colours
18. Any other



# PHOTOGRAPHY

## SECTION 5M – 02

### ENLARGEMENTS

*Over 6"x6" to a maximum of 8"x10"*

1. Photo Story – A series of 3 photos mounted on one mat
2. School Project
3. Panorama camera photo
4. People – any photo with people as the main subject ie: candid, portraits, children
5. Nature – Wild animals and or plants, and other natural phenomena
6. Domestic Animals – Pets and or farm animals including zoo and aquarium animals with or without human interaction
7. Domestic Plants – All plants grown or cultivated by humans ie: flowers, fruit, vegetables
8. Sports – Any photo that captures motion at a sporting event as its main subject
9. Action – Any photo that captures or stops motion as its main subject
10. Landscape/Seascape – Any photo that includes mountains, meadows, fields, and trees
11. Sunrise/Sunsets/Skies/Moons – Any photo with dramatic clouds and coloured skies, rainbows, captivated horizons, the moons etc.
12. Abstract – Any abstract photo is left to the imagination, a subject as it would appear naturally, but depicts that subject through shape, form, colour, texture and pattern. Computer enhancement is permissible.
13. Macro/Closeup – Any subject matter up close, usually of very small subjects. The finished photograph of the subject is greater than life size
14. Black and White/ Monochrome- Any subject that has been photographed or post processed in black and white sepia or monochrome tones
15. Still Life
16. City Scape
17. Photographic representation of our community, incorporating many colours
18. Any other

# AMATEUR ART

## SECTION 5N – 01

### AMATEUR ART

#### BEST ENTRY AMATEUR ART PLAQUE

##### *Rules and Regulations*

- Copies of other paintings, commercial photography, calendars etc. will not be accepted.
- All art must be ready to hang, or it will be disqualified, no exceptions
- All pictures including frames are not to exceed 40" in dimension or to be smaller than 8" in dimension
- All pictures are to be suitably mounted or framed.
- Framed pictures must have wire and screw eye fittings, and the wire drawn tightly across the back of the pictures to have a hanger attached
- The Fall Fair Board will take all possible care of entries, but will not be responsible for loss or damage
- No previous entries in the Alberni District Fall Fair will be received or exhibited.
- Due to limited space the number of entries allowed each exhibitor may have to be curtailed.

##### **SCORE CARD FOR ART**

**Originality..... 50**

**Composition, colour ..... 30**

**Technique..... 20**

**Total points ..... 100**

1. Alcohol Ink
2. Watercolors
3. Oils
4. Acrylics
5. Charcoal, and pastels
6. Illustrations, cartoons, etc.
7. Pencil
8. Ethnic Art
9. Finger painting
10. Crayon or pencil crayon drawing
11. Pen or ink
12. Brushed painting
13. Felt tipped pen
14. Calligraphy
15. Prints -lithograph, woodcuts, potato etc.
16. Collage
17. School project
18. "Theme of the Fair" any media
19. Mixed media
20. Picture from "Paint Night" Event **NEW**
21. Coloured page from colouring book **NEW**
22. Any other





# **FALL FAIR PLAQUES GIFT CERTIFICATES AND SPECIAL PRIZES**

## **Most Points in Livestock**

**Best Pig**

**Most Points in Sheep**

**Best Rabbits**

**Most Points in Poultry**

**Most Points in Pre-Juniors**

**Most Points in Juniors**

**Most Points in Pre-Teens**

**Most Points in Teens**

**Most Points in Fruits**

**Most Points in Floriculture**

**Most Points in Dahlias**

## **Joan Drinkwater Memorial for Vegetables**

**Most Points in Cut Flowers**

**Most Points in Home Cooking**

**Most Points in Canning**

**Most Points in Wine & Beer**

**Most Points in Needlecraft**

**Best Entry in 5K Quilting**

**Most Points Woodcraft**

**Best Painted Object**

**Best Entry Photography**

**Best Entry in Amateur Art**

# **75TH ANNIVERSARY SPECIAL PRIZES**

**The following prizes will be awarded in each age category for  
PJ - boys and girls 6 years and under - J - 7 to 10 years - PT - 11 to 14 years**

**ONE ALL DAY RIDE PASSES COURTESY OF WEST COAST AMUSEMENTS**

- **Biggest Sunflower Head - Section 5A - Class 8**
- **Biggest Zucchini - Section 5C - Class 84**
- **Best Painted Rock - Section 5L - 04 - Class 5**
- **Best Lego Display - Section 5L - 13**
- **Theme of the Fair Poster mixed media - Section 5N - 01- Class 17**

# **\$30,000** **CASH GIVE AWAY**

Proceeds go to the:

**Alberni District Fall Fair**  
**A S S O C I A T I O N**



**Only 6000**  
**tickets available!**

**TICKETS \$10.00 EACH Know your limit, play within it.**

**Purchase tickets in person through our  
office or online at [www.albernifair.com](http://www.albernifair.com)**

Note: Your numbered ticket will be manually sent to you . See Rules of Play on our website.

Draw date and time: Sept. 11, 2022 5:00pm at the ADFP grounds 4090 Hollywood St. Port Alberni, BC

Selling period: May 4, 2022 to Sept. 11, 2022, Tickets available - 6000 at \$10.00 each.

BC Gaming events license #1178607. Total value of all prizes \$30,000.

Winner consents to the release of their name by the licensee.

Alberni District Fall Fair Association, P.O. Box 32, Port Alberni BC V9Y 7M6

email: [albernifair@shaw.ca](mailto:albernifair@shaw.ca) Phone: 250-723-9313

Ticket purchasers must be 19 years of age or older. If a winning ticket bears a minor's name, the prize will be lawfully delivered on behalf of the minor to the minor's parent, legal guardian or trustee.