

ALBERNI DISTRICT FALL FAIR

PRIZE BOOK



**THE GATHERING PLACE TO
CELEBRATE + EDUCATE**

SEPT 4, 5, 6 & 7th 2025

80TH ANNIVERSARY



albernifair.com

Contents

Welcome to the Fair.....	2
Deadlines for Entries	3
4 - H Classes.....	4
Livestock Entry Form.....	14
Open Livestock Classes	16
Home Arts Entry Form	21
Home Arts Classes	23
Special Awards	39

Fall Fair Board of Directors

President Mitch Gardner
Vice President Carol Brown
Past President Scott Green

Directors

Agriculture & Home Arts
Crystal Kernachan & Tanya Swain
Attractions and Entertainment
Lance Goddard
Fair Services
Bill Brown
Grounds and Buildings
Scott Green & Mitch Gardner
Director at Large
Dave Hubert

Welcome to the 80th ALBERNI DISTRICT 2025 FALL FAIR



The Alberni District Fall Fair Association respectfully acknowledges doing our business within the unceded territories of the Hupacasath and Tseshaht First Nations. Our exhibitors are an integral part of the success of the fair. This year we have brought back some old exhibitor classes and are adding some new classes that are showing signs of rejuvenating and we have added a few new classes we thought our Home Arts Exhibitors would like to see. You can enter online or in person.

The goals of the fair are to advance the interest in industrial, sporting, agriculture, and community activities. To use the proceeds from each fair for the purpose of promoting or assisting enterprise designed to advance the civic or community welfare.

Check out our website www.albernifair.com for our online ticket system to purchase all your tickets including raffle, gate admissions, vendor, and parade applications and midway passes.

We are proud to say the fair is the gathering place to celebrate and educate.

*We hope to see you at this year's fair.
September 4th - 7th, 2025*

Contact Information
Alberni District Fall Fair
PO Box 32, Port Alberni V9Y 7M6
250 723-9313
Email: albernifair@shaw.ca
Website: www.albernifair.com

2025 ENTRY DEADLINES

**ALL ENTRY FORMS MUST BE IN THE FAIR OFFICE
BY THE FOLLOWING DATES:**

HOME ARTS
August 22, 2025



LIVESTOCK
August 22, 2025



HORSE SHOW
August 22, 2025



PARADE
August 29, 2025



**You can enter by mail, drop of at the fair office or on our new online system
www.albernifair.com**

IT IS FAST AND EASY!

The Exhibits must to dropped off at the following days and times:

All hobbies, sewing, photography, amatuer art, wine & beer.

TUESDAY, SEPTEMBER 2nd from 1PM to 8PM

All floriculture, horticulture, home cooking and other food categories.

WEDNESDAY, SEPTEMBER 3rd from 6PM to 8PM

Livestock in place prior to:

THURSDAY, SEPTEMBER 4th at 5PM

PLEASE GET YOUR ENTRIES INTO THE OFFICE IN A TIMELY MANNER

ALBERNI DISTRICT FALL FAIR

4-H DAY AT THE FAIR

Saturday September 6th, 2025

4-H RULES & REGULATIONS

- Leaders & Exhibiting members will be given wrist bands prior to arriving at the Fair once the Club entries have been put into the data base. All parents and siblings etc. accompanying exhibiting members are eligible for a discounted rate, please check with your 4-H Club information package that will be sent out.
- 4-H Entry closing date: August 22nd, 2025. Please use the provided entry form.
- Livestock Projects to be on grounds before 5:00 pm Thursday of the Fair
- Non-Livestock Projects to be brought to office Sept. 2nd
- Open to all 4-H Clubs currently enrolled in the 4-H Program. No entry Fee.
- Judging will be done on the Danish System.
- All 4-H project rules and regulations will apply.
- All 4-H animals must have a 4-H ID number and correct id for their project animal.
- All 4-H Club leaders must carry a copy of all attending 4-H Club Members Parent Member Release form.
- Club members may enter animals in regular open classes, but must complete the open entry forms, and pay the entry fee by the closing date as indicated on the Livestock Entry Forms. 4-H members must show their own projects.
- 4-H animals will be stalled in the 4-H Sections.
- Any clipping or grooming of a 4-H animal at the fair **MUST** be done by the 4-H member.
- 4-H members/leaders are compelled to abide by the SADD Rules. Any violation of those rules will not be tolerated.
- All 4-H members are responsible for Stall duty. See Section 3S - 01
- Little Britches classes will follow all 4-H classes.
- If you have a project not listed contact the office a judge will be found if warranted.
- 4-H Prize money as follows if not indicated differently on class description 1st - \$10.00, 2nd - &7.00, 3rd - \$5.00.

**Saturday Evening 4-H Pizza Dinner
held behind the 4-H Dairy Bar at 6:00PM**



ALBERNI DISTRICT FALL FAIR

4-H ENTRY FORM



Forms to be completed by Club Leader

Please send entries to : *Alberni District Fall Fair; Box 32, Port Alberni, V9Y 7M6*

4-H Club Name: _____

of Leaders attending: _____

Contact Leader: _____

of Members attending: _____

Email: _____

Of Pens/ stalls requested: _____

Phone: _____

of tables / cages requested: _____

Mailing Address: _____

EXHIBITOR NAME	4-H AGE	SECTION	CLASS	DESCRIPTION / BREED	PROJECT TAG # ID

Non-Livestock Projects to the office Monday or Tuesday prior to Fair

Please Bring Livestock (Small & Large) by 4:30pm Thursday of Fair Opening Day

Poultry - **Note:** for Unit I & II trios, please enter 2 Females for Rural and 3 Females for Urban

Specify Breed, Variety and size STD or / BTM

Children under 9 years of age may show in open classes and Little Britches

4-H CLASSES

SECTION 3A – 01

4-H DAIRY

1. Dairy Fitting Class
2. Junior Dairy Showmanship (9–11 years)
3. Intermediate Dairy Showmanship (12–14 years)
4. Senior Dairy Showmanship (15 and over years)

Champion & Reserve Dairy Showmanship Class

5. Unit I – Junior Heifer Calf (Dec. 1 to Feb. 28)
6. Unit I – Int. Heifer Calf (Sept to Nov. 30)
7. Unit I – Summer Yearling

Champion Dairy Calf Class

8. Unit II – Yearling Calf
9. Unit III – Two Year Old Cow

Grand Champion & Reserve Dairy Calf Class

10. Interclub Class

SECTION 3B -01

4-H BEEF

1. Beef Fitting Class
2. Junior Showmanship (9 – 11 years)
3. Intermediates Showmanship (12 – 14 years)
4. Senior Showmanship (15 years and older)

Champion & Reserve Showmanship Class

5. Beginners Beef Persons (Unit I)
6. Young Market animal - maximum 10 months of age (Unit X)

7. Market Calf (Unit II) or Carcass Steer U (Unit VI) under 1,100 lbs.

8. Market Calf (Unit II) or Carcass Steer (Unit VI) over 1,100 lbs

Champion & Reserve Market Calf Class

9. Young Heifer-Maximum 10 months of age (Unit Y)
10. Heifer (Unit IV)

Champion & Reserve Heifer Class

11. Cow Calf (Unit IV) cow must be in calf or have calf at foot

12. Mature Cow Calf (Unit V)

Grand Champion & Reserve Overall Beef Cow

13. Interclub Club

SECTION 3C – 01

4-H SHEEP

- All 4-H members must show in their own classes
- Prize Money for Showmanship & Projects classes: 1st - \$10.00, 2nd - \$7.00, 3rd - \$5.00
- Prize Money for Interclub Classes: \$10, \$8, \$6, \$4, \$2,
- Fitting Classes, Prize Money: \$10, \$8, \$6, \$4, \$2,
- Inter Club – 4 animals constitutes a club entry, to be judged on type, handling, ability, fitness and ring procedures
- Rosettes for Championship Classes
- If there is a trophy, all winners are encouraged to have photos taken, but the trophies must be left at the fair

\$50.00 - 1st Prize for overall Champion Ewer **and** sponsored by the BC Purebred Sheep Breeders Association. Note: 4-H Leaders need to apply directly BCPSBA to BCPSBA with hVPSBA

1. Sheep Fitting Class

2. Junior Showmanship (9 - 11 years)

3. Intermediate Showmanship (12 – 14 years)

4. Senior Showmanship (15 years and older)

Champion & Reserve Showmanship Class

5. Fed Lamb

6. Market Lamb

Champion & Reserve Market Class

7. Ewe Lamb – White Faced

8. Ewe Lamb – Black Faced

9. Ewe Lamb – Full Fleece

Champion & Reserve Ewe Lamb Class

10. Yearling Ewe – White Faced

11. Yearling Ewe - Black Faced

12. Yearling Ewe - Full Fleeced

Champion & Reserve Yearling Ewe Class

13. Ewe with Lamb at foot

Grand Champion & Reserve Overall Ewe Class

14. Interclub Class

SECTION 3D – 01

4-H SWINE

1. Swine Fitting Class
2. Junior Showmanship (9-11 years)
3. Intermediate Showmanship (12 – 14 years)
4. Senior Showmanship (15 years and older)
Champion & Reserve Showmanship Classes

5. Market Gilt or Barrow - **Champion & Reserve Market**

6. Breeding Gilt
7. Yearling Sow
8. 2-year-old Sow
9. Sow with Litter

Champion & Reserve Sow Class

10. Interclub Class **Reserve Overall Sow**

SECTION 3E – 01

4-H GOATS

1. Goat Fitting Class
2. Junior Showmanship (9 – 11 years)
3. Intermediate Showmanship (12 – 14 years)
4. Senior Showmanship (15 years and older)
Champion & Reserve Showmanship Classes

5. Kid Doe
6. Yearling Doe
7. Doe with Kids
8. Milking Doe

Champion & Reserve Doe Class

9. Chevon
10. Carcass
11. Pack Goat
12. Miniature Goat
13. Fibre Goat

Grand Champion & Reserve Overall Goat

14. Interclub Class

SECTION 3F – 01

4-H RABBITS

1. Rabbit Fitting Class
2. Junior Showmanship (9 - 11 years)
3. Intermediate Showmanship (12-14 years)
4. Senior Showmanship (15 years and older)
Champion & Reserve Showmanship Class
5. Unit I Doe, Meat
6. Unit I Doe, Fancy
7. Unit I Doe, Wool
Championship & Reserve Doe Class

4-H CLASSES

SECTION 3F – 01

4- H RABBITS

8. Unit I Buck, Meat
9. Unit I Buck, Fancy
10. Unit I Buck, Wool

Champion & Reserve Buck Class

11. Unit II Doe with Litter
12. Unit II Meat Pen, Group of 3 rabbits, not over 70 days and over 5lbs (2.25kg)
13. Unit IV Replacement Stock - Doe
14. Unit IV Replacement Stock - Buck

Grand Champion & Reserve Overall Rabbit

15. Interclub Class

SECTION 3G – 01

4-H CAVY

1. Cavy Fitting Class
2. Junior Showmanship (9-11 years)
3. Intermediate Showmanship (12 – 14 years)
4. Senior Showmanship (15 years and older)

Champion & Reserve Showmanship Class

5. Unit I Cavy, Sow (short coat)
6. Unit II Cavy, Sow (long coat)

Champion & Reserve Sow Class

7. Unit II Cavy, Boar
8. Unit II Cavy, Boar (long coat)

Champion & Reserve Boar Class

9. Unit II Sow with Litter (2 ½ to 5 ½ wks.)
10. Unit III Replacement Sow
11. Unit III Replacement Boar

Champion & Reserve Overall Cavy Class

12. Interclub Classes



4-H CLASSES

SECTION 3H – 1

4-H POULTRY

1. Poultry Fitting Class Fitting a Fitting a
2. Junior Showmanship (9 – 11 years)
3. Intermediate Showmanship (12 – 14 years)
4. Senior Showmanship (15 years and older)

Champion & Reserve Showmanship class

Note: for Unit I & II trios please enter 2 females and 1 male for rural, 3 females for urban. Please specify breed, variety and size (Std or Btm) and or Bantam Birds

4. Unit I - Cockerel
 5. Unit I - Pullet
 6. Unit I - Trio (urban or rural)
 7. Unit II - Young Cockerel
 8. Unit II - Young Pullet
 9. Unit II Trio (urban or rural)
 10. Unit II - Hen with young
 11. Unit III - 2 Trio's
 12. Unit IV - a) Layer Hen
 13. Unit IV - a) Layer or Trio
 14. Unit IV - b) Hatchery Cockerel (6-8 weeks)
 15. Unit IV - b) hatchery Pullet (6-8 weeks)
 16. Unit IV - Hatchery Trio (6 - 8 weeks)
 17. Unit IV - c) meat Cockerel
 18. Unit IV - c) Meat Pullet
 19. Unit IV - c) Meat Trio
 20. Unit V - a) Layer Hen
 21. Unit V - a) Layer Trio
 22. Unit V - a) Production Charts
 23. Unit V - a) 3 doz eggs
 24. Unit V - b) Meat Cockerel
 25. Unit V - Meat Pullet
 26. Unit V - Meat Trio
 27. Unit V - b) Production Charts
 28. Unit I - Drake
- Best Overall - Cockerel, Drake, Grander*
Best Overall - Pullet, Duck, Goose
Best Overall Waterfowl
29. Unit I - Duck
 30. Unit I - Pair or trio Duck
 31. Unit II - Young Drake
 32. Unit II - Young Duck
 33. Unit II - Unit II - Duck and Ducklings
 34. Unit II - Young pair or Trio (ducks)

SECTION 3H – 1

4-H POULTRY

35. Unit IV - a) Layer Duck
36. Unit IV - a) Hatchery Drake (6 - 8 wks)
37. Unit IV - b) Layer Duck
38. Unit IV - hatchery Trio (6-8 wks)
39. Unit IV - c) meat Drake
40. Unit IV - c) meat Duck
41. Unit IV - c) Meat Trio (ducks or geese)
42. Unit I - Gander
43. Unit I - Goose
44. Unit I - Pair or Trio
45. Unit I - Young Gander
46. Unit II - Young Goose
47. Unit II - Pair or Trio or Pair or Trio
48. Unit II - Goose with Gosling
49. Unit IV - a) Layer Goose
50. Unit IV - a) Layer Pair or Trio
51. Unit IV - b) Hatchery Cockerel (6-8 wks)
52. Unit IV - b) Hatchery Pullets (6-8wks)
53. Unit IV - b) hatchery Trio (6-8 wks)
54. Unit IV - c) Meat Cockerel
55. Unit IV - c) Meat Pullet
56. Unit IV - Meat Trio
57. Interclub Class

Note: for trios please enter 2 females and 1 male, specify breed, variety, and size

SECTION 3K – 01

4-H DOG

Note: this class will be offered if enough interest is generated. 4-H Members must show their own project

1. Dog Fitting Class
 2. Junior Showmanship (9 – 11 years)
 3. Intermediate Showmanship (12 – 14 years)
 4. Senior Showmanship (15 years and older)
- #### **Champion & Reserve Showmanship Class**
5. Unit I Obedience
 6. Unit II Obedience
 7. Unit III Obedience
- #### **Champion & Reserve Obedience Class**
8. Interclub Class

SECTION 3L – 01

4-H OUTDOOR LIVING

1. Unit 1 – Wonderful World of Wildlife Display
2. Unit 1 – Record Book
3. Unit 2 – All Things Green Display
4. Unit 2 – Record Book
5. Unit 3 – Looking at the Sky and Weather Display and wear her display
6. Unit 3 – Record Book
7. Unit 4 – Eye on the Environment
8. Unit 4 – Record Book
9. Unit 5 – Outdoor Survival
10. Unit 5 – Record Book
11. Unit 6 – Adventures in Wilderness Poster
12. Unit 6 – Record Book

SECTION 3M – 01

4-H SEWING

Unit I – Sew On! Steady Stitches – member to complete 2 projects which include the 6 skill requirements for Unit I

1. Unit I – Project 1
2. Unit I – Project 2
3. Unit I – Record Book

Unit II – Sew On! Creative Construction – member to complete 2 projects with include 6 skill requirements for Unit II

4. Unit II, Project 1
5. Unit II, Project 2
6. Unit II, Record Book

Unit III – Sew On! The Personal Touch – members to complete 2 projects which include the 6 skill requirements for Unit III

7. Unit III – Project 1
8. Unit III – Project 2
9. Unit III – Record Book

SECTION 3N – 01

4-H CRAFTS

Projects A – C must use a different technique

1. Unit I - Project A
2. Unit I - Project B
3. Unit I - Project C t I Project A
4. Unit I - Record Book I Project C Unit I - Record Book Record Book

Projects A - C must use a differnt technique or use

5. Unit II – Project A
6. Unit II – Project B
7. Unit II – Project C

4-H CLASSES

SECTION 3N – 01

4-H CRAFTS

8. Unit II – Record Book
The member must design one article
9. Unit III – Project A
10. Unit III – Project B
11. Unit III – Project C
12. Unit III – Record Book
One motif is to be designed by member
13. Unit IV – Project B
14. Unit IV – Project C
15. Unit IV – Record Book

SECTION 3P – 01

4-H CLOVER BUDS

1. Unit I – Scrapbook
2. Unit II – Scrapbook
3. Unit III – Scrapbook
4. Unit IV
5. Clover Bud Craft

SECTION 3Q – 01

4-H SMALL ENGINES

1. Junior Small Engine Showmanship
2. Intermediate Small Engine Showmanship
3. Senior Small Engine Showmanship
Champion & Reserve Showmanship Classshi p
4. Four Stroke Engine
5. Two Stroke Engine

SECTION 3R – 01

4-H PHOTOGRAPHY

1. Unit I – Record Book
2. Unit I – Notebook
3. Unit I – Display of five 5"x7" mounted pictures
4. Unit II – Record Book
5. Unit II – Notebook
6. Unit II – Display of five 5"x7" mounted pictures
7. Unit III – Record Book
8. Unit III – Notebook
9. Unit III – display of five 5"x7" mounted pictures

4-H CLASSES

SECTION 3S – 01

4-H STALL COMPETITIONS

- | | |
|----------------|------------|
| 1. Beef | 5. Goat |
| 2. Swine | 6. Poultry |
| 3. Dairy | 7. Sheep |
| 4. Rabbit/Cavy | 8. Horse |

Open to all 4-H Clubs entering in the 4-H Livestock Section. Judging commences at 7pm on Thursday to 4pm on Saturday. Club Leaders are asked to refrain from cleaning the stalls and animals. This is a 4-H members competition and not for parents and leaders. Judges will dock points for any club not doing their own work and may also dock points for not having a member present.

- a) Identification – each club to be identified by an appropriate sign. Further decoration is encouraged Points..... **15**
- b) Stalls – adequate bedding, cleanliness, neatness, and tidiness are expected **35**
- c) Animals – tied properly, kept clean, and well groomed..... **20**
- d) Equipment and supplies – boxes kept tidy and out of alleyways. Supplies kept neat and orderly . **10**
- e) Exhibitors – courteous and polite to the public at all times. Members should be neat and their conduct above reproach **20**

Total Points = 100

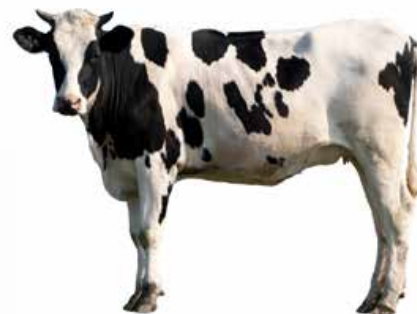
4-H EDUCATIONAL DISPLAY BOARDS —

Open to 4-H clubs or individual 4-H members. Provincial 4-H regulations prevail. Prize Money: 1st - \$15, 2nd - \$10., 3rd - \$5.

- 9. 4-H Educational Display Board #1
- 10. 4-H Educational Display Board #2
- 11. 4-H Poster Competition

4-H INTERCLUB

- 12. Farmer Bill's Interclub Challenge - all clubs may participate in the Main Show Ring at the conclusion of 4-H Day. **Prize Money:**
1st - \$100.00, 2nd - \$75.00 3rd - \$50.00



4-H AND OPEN HORSE SHOW & GYMKHANA

SATURDAY SEPTEMBER 6th - SUNDAY SEPTEMBER 7th

9 AM Start both days

Conveyor: Carol Fiorilli Phone: 250-731-0201

Email: carolfiorilli58@gmail.com

****Entries Due by Aug 30th****

Please send Entries to :

Alberni District Fall Fair
PO Box 32, Port Alberni V9Y 7M6

Approved Helmets with fixed harnesses required for all mounted activities.

Judges: TBA

Competitor Information

Name: _____

Birthdate: _____

Mailing Address: _____

Horse Council # _____
Mandatory) _____

Email Address: _____

Phone # _____

Horse Name: _____

4-H Horse ID# : _____

4-H Club: _____

4-H Leader's Name in Attendance: _____

4-H Leader's Phone Number: _____

Entrants must clean their stalls, around trailers, and remove all garbage.

HCBC Cards required, 4-H Cards for 4-H members required, 4-H Leaders MUST be in attendance

I make these entries at my own risk and have read completely and agree to be subjected to the
2025 Rules and Regulations of the Alberni District Fall Fair Horse Show and I agree to be bound thereby.

Signature of Owner or Rider: _____

Date of Signature: ____/____/____
D M Y

Signature of Parent or Guardian (if rider is under 18 years old): _____

4-H AND OPEN HORSE SHOW & GYMKHANA

SATURDAY SEPTEMBER 6TH - SUNDAY SEPTEMBER 7TH

Please check (✓) all classes entered (No Cross entries between Walk, Trot/Jog and Canter or Ranch and Western classes)

Saturday: Open All Breed Show Start at 9:00 am Sept 6th - Trail runs 11am-2pm (Classes are \$5 entry fee or \$20 per Category)

Classes

Entry Fees Due

	1	Halter Mares
	2	Halter Geldings
	3	Showmanship Walk Trot
	4	Showmanship Jr.
	5	Showmanship Sr.
	6	English Equitation Walk Trot
	7	English Equitation Jr.
	8	English Equitation Sr.
	9	Hunter Under Saddle Walk Trot
	10	Hunter Under Saddle Jr.
	11	Hunter Under Saddle Sr.
	12	Western Horsemanship Walk Jog
	13	Western Horsemanship Jr.
	14	Western Horsemanship Sr.

	15	Western Pleasure Walk Jog
	16	Western Pleasure Jr.
	17	Western Pleasure Sr.
	18	Ranch Riding Walk Jog
	19	Ranch Riding Jr.
	20	Ranch Riding Sr.
	21	Ranch Rail Walk Jog
	22	Ranch Rail Jr.
	23	Ranch Rail Sr.
	24	Trail Walk Jog (English or Western)
	25	Trail Jr. (English or Western)
	26	Trail Sr. (English or Western)
	27	Ranch Trail Walk Jog
	28	Ranch Trail Jr.
	29	Ranch Trail Sr.

Sub Total \$

Sunday 4-H Show Starts at 9:00 am Sept 7th (4-H Classes are no charge entry)

	1	4-H Fitting All Units
	2	4-H Showmanship Unit 2
	3	4-H Showmanship Unit 3
	4	4-H Showmanship Unit 4 & Up
	5	4-H Unit 2 Mounted English

	6	4-H Unit 3 Mounted English
	7	4-H Unit 4 & Up Mounted English
	8	4-H Unit 2 Mounted Western
	9	4-H Unit 3 Mounted Western
	10	4-H Unit 4 & Up Mounted Western

AGE CATEGORIES

Please circle one: **Peewee 11 & Under** **Junior 12-17** **Senior 18 and up**

Sunday Gymkhana Start 11:30 am (Immediately after 4-H) Sept 7th (\$25 for all classes)

	1	Flag Pee Wee
	2	Flag Jr.
	3	Flag Sr.
	4	Pole Pee Wee
	5	Pole Jr.
	6	Pole Sr.
	7	Stake Pee Wee
	8	Stake Jr.
	9	Stake Sr.

	10	Skurry Pee Wee
	11	Skurry Jr.
	12	Skurry Sr.
	13	Keyhole Pee Wee
	14	Keyhole Jr.
	15	Keyhole Sr.
	16	Barrel Pee Wee
	17	Barrel Jr.
	18	Barrel Sr.

Sub Total \$

4-H Stalls are no charge Thurs-Sunday - Open Stalls are \$10 per day

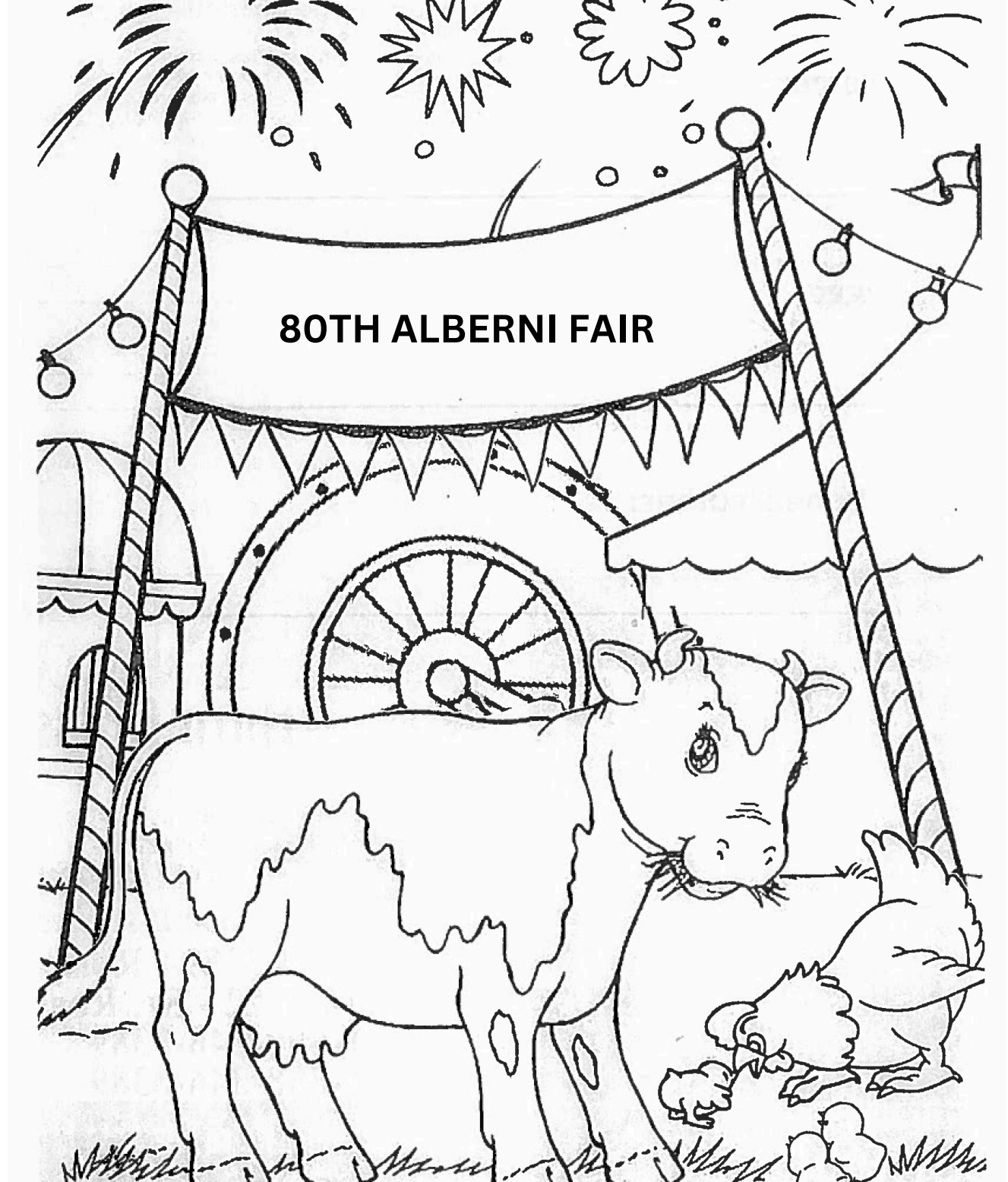
of stalls requested

X

of days requested

Competitor Name _____

Total Entry Fees & Stalls to be paid \$



FALL FAIR COLOURING CONTEST RULES

Entry Deadline: August 29th

Please ensure the name of entrant, age, and phone number are on the back of all entries

Entries to be dropped off at the fair office

4090 Hollywood Street. Port Alberni

Prizes: 3 prizes will be awarded in each age category of one all day ride pass

Ages: 4 to 6 years, 7 to 9 years, 10 to 12 years

All winners will be notified on or before Sept. 2nd

LIVESTOCK REGISTRATION ALBERNI DISTRICT FALL FAIR

***Mailing Address: PO Box 32, Port Alberni BC V9Y 7M6
or Email: albernifair@shaw.ca***

General Livestock Entry Closing Date - August 22nd
NO LATE ENTRIES, NO EXCEPTIONS

BARN DOORS ARE CLOSED AT 9PM

Name _____ **Telephone** _____

Address _____ **E-Mail Address** _____

Postal Code _____

****Please Use a Separate Entry Form for each person entering so individual exhibitor #'s can be assigned. Indicate if animal is a 4-H project or only entered in open classes for penning purposes.**

Subject To all RULES & REGULATIONS of the Alberni District Fall Fair.

****Entry Fees must be paid before show classes begin**

[illegible]

LIVESTOCK RULES & REGULATIONS

ALL ANIMALS MUST BE PROPERLY IDENTIFIED WITH CANADIAN IDENTIFICATION PROGRAM

****NO SMOKING IN THE BARNS****

****PLEASE KEEP ANIMALS OUT OF LOGGER SPORTS AREA AND MIDWAY****

****** NOTE REGULATIONS******

- All animals entered for competition must be registered prior to show and entries are paid.
- Entry closing date is August 22, 2025.
- 4-H Members are welcome to show in all Open Livestock Classes.
- Both 4-H and Open Championship & Reserve Classes are Rosettes Only (no extra prize money)
- Stall space allotted as determined by the Barn Supervisor. (special requests may be considered if submitted with entries)
- The Alberni District Fall Fair reserves the right to refuse any animal that show evidence of contagious diseases or parasites. The Agriculture Director on advice of the Consultant Veterinarian is authorized to refuse animals that are not in apparent good health. Animals displaying unruly & unmanageable behavior will be asked to leave.
- All exhibits must be penned before 5pm on Thursday and may not be removed prior to 9pm Saturday without first applying to the Agriculture Director at time of entry. (Consideration will be given to exhibitors from the mainland). Failure to comply may result in forfeiture of prize money. Vehicles will be allowed on the grounds after the Fair closes at 11 pm. Animals must be removed from the barns by 9am Sunday.
- No overnight sleeping in the barns
- Exhibitors to display your Farm Name & Breed type at your pens. Exhibitors are to keep their stalls or pens neat and presentable.
- Insurance: it is suggested that exhibitors obtain public liability insurance to protect themselves. Consult our insurance broker via contacting ADFP office or email albernifair@shaw.ca



OPEN LIVESTOCK

SECTION 1 – A

DAIRY

Entry Fee: \$8.50 per animal per class

Group Classes: \$8.50 per entry

**Prize Money per class: 1st - \$85., 2nd - \$75.,
3rd - \$60., 4th - \$40., 5th - \$20., 6th - \$10.**

Please read the General Livestock Rules

- All animals over 1 year of age must have neck ropes
- Best Udder Class in an interbreed
- Competition 1st and 2nd place animals in all Dairy Cow classes are required for this and prize money will be paid for 1st and 2nd places only (no entry fee)
- Senior yearling in milk will be shown as 2-year old's
- In the absence of competition in any classes or if the stock exhibited is of inferior quality the judge will award only such premiums as they deem the exhibit to merit.
- Except for group classes animals may be shown in ONE CLASS ONLY
- Dress Code: **WHITE ONLY**

BREEDS – A Jersey and Guernsey

B Ayrshire **C** Holstein

BREED CLASSES

1. Female, Junior
 2. Female, Intermediate Calf
 3. Female, Senior Calf
- Champion & Reserve Calf Class**
4. Female, Junior Yearling
 5. Female, Intermediate Yearling
 6. Female, Senior Yearling
 7. Female, 2 years and older
- Champion Dairy Cow Class &
Grand Champion & Reserve Overall Dairy**

8. Get of Sire (3 females)
9. Breeders Herd (4 females)
10. Progeny of Dam
11. Best of Udder (no entry fee)
12. Veal

SECTION 1 – B

BEEF

Entry Fee: \$8.50 per animal, per class.

Group Classes: \$8.50 per entry

**Prize Money per class: 1st - \$85., 2nd - \$75.,
3rd - \$60., 4th - \$40., 5th - \$20., 6th - \$10.**

Please read the General Livestock Rules

- BULLS except calves MUST have nose leaders in place and adequate staff for their control. All animals over one year of age must have neck ropes. Animals showing unruly or unmanageable behavior will be asked to leave.
- Except for group classes animals may be shown in **ONLY ONE CLASS**. Maximum entries per exhibitor 2 per class.
- In the absence of competition in any classes or if the stock exhibited is of inferior quality the judge will award only such premiums as they deem the exhibit to meet.
- When there is significant numbers – 4 per class of one breed – those animals will have their own breed class.
- ie: Class 5 Heifer Class – 9 animals in the class – 4 or more are Angus – they will have their own class.

BREED CLASSES

1. Bull Calf
 2. Junior Bull Yearling
 3. Senior Bull Yearling
 4. Bull 2 years old
- Champion & Reserve Bull Class**
5. Heifer Calf
 6. Junior Heifer Yearling
 7. Senior Heifer Yearling
 8. 2-year-old Cow with or without calf
 9. Mature Cow (over 2) with calf
- Grand Champion & Reserve Cow Class**

10. Breeders herd – (4 females or 1 bull and 3 females over 1 year)
 11. Get of Sire – group of 3 animals
 12. Progeny of Dam
 13. Market Steer – light
 14. Market Steer – heavy
- Champion & Reserve Market Steer Class**

SECTION 1 – C

SHEEP

Entry Fee: \$6.00 per class

Group Classes: \$6.00 per entry

Prize Money per class: 1st - \$50., 2nd - \$40., 3rd - \$20., 4th - \$15., 5th - \$10., 6th - \$6.

Please read General Livestock Rules & Regulations

- All entries (other than wool class) must be shown in short fleece, 1" staple maximum with a neat, clean and tidy appearance. market animals must be slick shorn.
- Except for Breeds Flock or Get of Sire animals may be shown in **ONE CLASS ONLY** (eg: cannot show a lamb as a market lamb and then as a ewe lamb)
- Maximum entries per exhibitor 2 per class
- In the absence of competition in any classes or if the stock exhibited is of inferior quality the judge will award only such premiums as they deem the exhibit to merit.

BREED CLASSES

1. Market Lamb Class – Lambs entered may be any breed or cross, Ewe or Wether (all market animals must have been castrated and slick shorn)

Champion & Reserve Market Lamb

2. Ram lamb - black face
3. Ram Lamb - white face
4. Ram Lamb - wool
5. Ram Lamb - hair

Champion & Reserve Ram Lamb

6. Ram Yearling or older -black face
7. Ram Yearling or older white face
8. Ram Yearling or older -wool
9. Ram Yearling or older - hair

Champion & Reserve Yearling

Grand Champion & Reserve Overall

10. Ewe Lamb -black face
11. Ewe Lamb -white face
12. Ewe Lamb -wool
13. Ewe Lamb - hair

Champion & Reserve Ewe Lamb

14. Ewe Yearling -black face
 15. Ewe Yearling -white face
 16. Ewe Yearling -wool
 17. Ewe Yearling - hair
- Champion & Reserve Yearling Ewe**
18. Mature Ewe (2 years or older)
 19. Ewe with Lamb at Foot

Grand Champion & Reserve Ewe

OPEN LIVESTOCK

Section 1-C

SHEEP

20. Get of Sire - A group of 3 animals, by the same sire, both sexes may be represented, full mouth milk teeth
21. Breeders Flock - Pen of 1 Ram, 3 ewes

SECTION 1 – D

SWINE

Entry Fee: \$6.00 per class

Group Classes: \$6.00 per entry

Prize Money per class: 1st - \$50., 2nd - \$40., 3rd - \$20., 4th - \$15., 5th - \$10., 6th - \$6.

Please read General Livestock Rules & Regulations

- Swine need not to be purebred
- Maximum entries per exhibitor 2 entries per class

BREED CLASSES

1. Boar, one year and over, any breed
 2. Boar, under 1 year, any breed
- Champion & Reserve Boar Class & Reserve s s**
3. Breeding Gilt, any breed
 4. Sow with litter of not less than 8, any breed
- Champion & Reserve Sow Class**
5. Market Hog - **Champion & Reserve Champion**
 6. Pot Belly Pig -Boar
 7. Pot Belly Pig - Kune Kuni
 8. Pot Belly Pig -Gilt
 9. Pot Belly Pig - Kune Kuni

Grand Champion & Reserve Pot Belly Pig



OPEN LIVESTOCK

SECTION 1 – E

GOATS

Entry Fee: \$6.00 per class

Group classes: \$6.00 per entry

Prize Money per class: 1st - \$50., 2nd - \$40., 3rd - \$20., 4th - \$15., 5th - \$10., 6th - \$6.

Please read General Livestock Rules & Regulations

- Dress Code: WHITE ONLY for dairy or Dairy
- Maximum entries per exhibitor, two per class
- In the absence of competition in any classes or if the stock exhibited is inferior quality, the judge will award only such premiums as they deem the exhibit merits
- Except for Group Classes animals may be shown in ONE CLASS ONLY (eg: cannot show a kid as a Chevon and as a Doe Kid)
- When there are significant numbers – 4 per class of one breed those animals will have their own breed class
- Class 2, Doe under one year- 9 animals in the class – 4 or more are Nigerian Dwarf – they will have their own class

BREED CLASSES

1. Chevon – kids entered may be any breed or cross, kid doe or wether (all market animals must be castrated) may not be shown in any other class - **Champion & Reserve**
2. Doe, under 1 year - **Champion & Reserve**
3. Yearling, dry
4. Yearling, in milk

Champion & Reserve Yearling Class

5. Senior Doe, dry

6. Senior Doe, in milk

Grand Champion & Reserve Doe Class

7. Doe with Kid at Foot & **Reserve Overseas**
8. Get of Sire – 3 does any age different Dams, same sire owned by exhibitor
9. Progeny of Dam
10. Pack animal

SECTION 1 – F

RABBITS

Entry Fees: \$2.50 per class

Prize Money per class:

1st - \$7., 2nd - \$5., 3rd - \$3.

Please read General Livestock Rules & Regulations

- All entries must be in the barns by 5pm on Thursday of fair
- All entries will be judged as entered, be sure to include breeds, variety, sex of the animals
- This is a carry cage show, all cages must be leak proof and labeled with the exhibitor's name, and breed of animal
- All exhibitors must supply their own leak proof cages for their animals
- Any animal showing signs of disease will be removed from the showroom
- Classes are limited to two (2) entries per exhibitor in each class
- Animals may show in one (1) class only
- In the absence of competition in any classes or if the stock is inferior quality the judge will award only such premiums as they deem the exhibit merits.

BREED CLASSES

1. Commercial Buck
2. Commercial Doe
3. Wool Buck
4. Wool Doe
5. Fancy Buck
6. Fancy Doe
7. Commercial Trio
8. Doe with Litter

SECTION 1 – L

CAVY

See entry fees, prize money and regulations.

Rabbit Section apply

BREED CLASSES

1. Cavy – Sow with short hair
2. Cavy – Boar with short hair
3. Cavy – Sow with litter (short hair)
3 to 6 weeks old
4. Cavy – Sow with long hair
5. Cavy – Boar with long hair
6. Cavy – Sow with litter (long hair)
3 to 6 weeks old

Entry Fees for all classes: \$2.50

Prize Money for all classes: 1st - \$7., 2nd - \$5., 3rd - \$3.

Please read the General Livestock Rules & Regulations

- All entry forms must be complete with section, class breed, variety and total number of birds
- Birds must be in the barns by 5pm on Thursday of fair
- Classes will be provided in both bantam and standards
- All birds must be classes of cocks, hens, cockerel, pullet, old trio, young trio or urban trio. Birds in a pair or trio may also be entered individually even though they are housed in the same cage
- All birds will be judged according to the American Poultry Association "Standards of Perfection" Dubbing not required.
- No "bad looking" birds will be judged. Diseased birds, will not be allowed to remain on the grounds.
- All breeds will be judged separately
- Classes are limited to 3 entries per class up to 3 breeds per exhibitor
- In the absence of competition in any classes or if the stock exhibited is of inferior quality the judge will award the exhibit is inferior quality the judge will award the exhibit to merit

EXAMPLE OF HOW TO ENTER YOUR POULTRY TRIO'S

4-H	OPEN	SECTION	CLASS	NAME OF ANIMAL	BREED	REG #	TATTOO EAR TAG	BIRTHDATE	FEE
	✓	1H-01	1	BROOSTER	BUFF ORP	1			2.50
	✓	1H-01	2	SADIE	BUFF ORP	2			2.50
	✓	1H-01	2	SALLY	BUFF ORP	3			2.50
	✓	1H-01	5	B, S & S	BUFF ORP	1,2,3			2.50



SECTION 1 – H – 01

STANDARD POULTRY BREED CLASSES

1. Cock
2. Hen
3. Cockerel
4. Pullet
5. Old Trio
6. Young Trio
7. Urban Trio – 3 hens

SECTION 1 – H – 02

BANTAM POULTRY BREED CLASSES

1. Cock
2. Hen
3. Cockerel
4. Pullet
5. Old Trio
6. Young Trio

SECTION 1 – H – 03

TURKEYS BREED CLASSES

1. Cock
2. Hen
3. Old Trio
4. Young Trio

SECTION 1 – H – 04

DUCK BREED CLASSES

1. Drake
2. DuckDuckDuck
3. Old Trio or Pair
4. Young Trio or Pair

OPEN LIVESTOCK

SECTION 1 – H – 05

GEESE BREED CLASSES

1. Gander
2. Goose
3. Old Trio or Pair
4. Young Trio or Pair

SECTION 1 – H – 06

PIGEONS BREED CLASSES

1. Old Cock banded
2. Old Hen banded
3. Young Cock banded
4. Exotic

SECTION 1 – H – 07

EXOTIC BREED CLASSES

Example: Pheasant, Quail, Peacocks

1. Cock
2. Hen
3. Pair
4. Old Trio
5. Young Trio



ALBERNI DISTRICT FALL FAIR ENTRY FORM

Mailing Address: PO Box 32, Port Alberni BC V9Y 7M6
or Email: albernifair@shaw.ca

Note: Please use the separate entry form for all Livestock
One Exhibitor per entry form. Entry fees must be paid prior to judging.

AGE CATEGORIES

PJ - Boys & Girls, 6 years & under

J - Boys & Girls, 7 to 10 yrs.

PT - Pre-teens, 11 to 14 yrs.

T - Teens, 15 to 18 yrs.

OP - Open, 19 years & over

SC - Seniors, 65 yrs. & over

SN - Special Needs

Name _____ Telephone _____

Address _____ E-Mail Address _____

Postal Code _____ Birthdate _____

Would you like an email notice of when the prize book is ready yearly Yes / No

AGE	SECTION	DIVISION	CLASS	ENTRY FEE	DESCRIPTION OF ARTICAL
OP	SK	8	13	\$1	Wall hanging, hand quilted

PLEASE NOTE; entry forms must be mailed or dropped off at the Fall Fair Office on the Fairgrounds by the entry deadlines as indicated in the General Rules.

If you are entering on of the feature classes i.e.: Best baked muffins or other, please indicate on the entry form.

PLEASE NOTE THE FOLLOWING TIMES TO BRING YOUR EXHIBITS:

Tuesday, Sept. 2, 2025, 1 PM – 8 PM – Wine, Honey, Needlecraft, Hobbies, Sewing, Photography, Amateur Art.
All these entries will be judged on Wednesday morning and must be in place Tuesday night.

You may enter the following at this time or on Wednesday, Sept. 3, 2025, 6 PM – 8 PM – Home baking, floriculture and horticulture exhibits. Fresh flowers must be in place and ready for judging by 9 AM, Thursday Sept. 4, 2025

Exhibits to be picked up Sunday, Sept. 7th at 4pm

GENERAL RULES

All entry forms must be submitted in person, by mail or email or through our online entry platform on our website: www.albernifair.com
DEADLINE FOR ALL ENTRY FORMS FOR ALL EXHIBITORS IS AUGUST 24, 2025

ABSOLUTELY NO LATE ENTRIES ACCEPTED

EXHIBIT DELIVERY AND PICK UP TIMES

**WINE, HONEY, BEER, NEEDLECRAFT, HOBBIES, PHOTOGRAPHY, AMATEUR
ART Tuesday Sept. 2, 2025 – 1PM to 8PM**

**HOME COOKING, FLORICULTURE AND HORTICULTURE
Wednesday September 5, 2025 – 6PM to 8PM**

PICK UP EXHIBITS SUNDAY, SEPT. 7TH AT 4PM

- **Entry Fees:** All entries are subject to entry fees listed as follows: All classes \$1.00, except where indicated different in the class description
- Age Categories: Boys & girls under 6 - PJ; Boys & girls 7 to 10 years - J; Pre-Teens 11 to 14 years - PT; Teens 15 to 18 years - T; Open 19 years and over; Seniors 65 years and over - S; Special Needs - SN
- All ages may enter all classes unless specified differently. Entries will have been grouped into age categories (see above)
- All PJ and J age categories will receive a participant's ribbon
- No prize will be awarded for any item that has been previously awarded at the fair.
- When there is only one entry in a class the exhibit must be first class standard to receive 1st place.
- It is the responsibility of each exhibitor to enter the correct class. If any entry is obviously in the wrong category the Convener in charge of each area will make the changes.
- No person will be allowed to enter more than one exhibit in any class, except where specified. In no case will more than one prize be awarded to an exhibitor in any class.
- All articles on exhibition must be the bona fide property of an made or raised by the exhibitor.
- If the judge deems an exhibit unworthy of a prize, they may withhold the award. Where competition is absent or limited, the judge may make awards accordingly to the merits of the exhibits as in in competition.
- No person shall be allowed to engage the judge in conversation or otherwise hinder him/her in their work during the time the exhibits are being judged.
- Prize money less than \$10.00 owing not picked up from the fair office, will be treated as a donation to the fair
- Vouchers for merchandise offered as prizes must be presented to the donor within one month after date received, otherwise it will be forfeited.
- All exhibitors must report to the Fair Office to pick up their tags and receipts before proceeding to designated building to drop off exhibits. All tags must always be left on the exhibits while in the exhibit hall.
- Any protests must be in writing to the Fall Fair Administrator.
- The Fall Fair Board of Directors will not be held responsible for any loss or damage to exhibits. Security is provided overnight for all buildings.
- The Fall Fair Board of Directors reserves the right to enforce any rule which lends to the betterment of the show.
- All service vehicles must be off the grounds by opening time each day.
- 1st - \$5., 2nd - \$3., 3rd - \$1.

**Non-Livestock Prize Money will be paid
at the Fair Office during the following hours:**

Friday Sept. 5, 2025 from 3pm to 9pm

**Saturday Sept. 6, 2025 from
10am to 4pm and 7pm and 9pm**

Sunday Sept. 7, 2025 from 10am to 5pm

**Livestock Pay Out:
8pm on Saturday Sept. 6, 2025**

Note: please present your receipt at the time of prize money pick up.

Admission at the gates on Sunday is in effect until 3:30pm

SECTION 5A

GRASSES, GRAINS, FODDER PLANTS —

1. Orchard Grasses, 2" diameter at tie
2. Clover, 3" diameter at tie
3. Timothy, 2" diameter at tie
4. Alfalfa, 3" diameter at tie
5. Any other variety named
6. Silage corn, 3 stalks
7. 1 lb. transparent plastic bag silage
8. Sunflower, 3 stalks
9. Barley, 3" diameter at base of heads
10. Oats, 3" diameter at base of heads
11. Wheat, (fall) 3" diameter at base of heads
12. Wheat (spring) 3" diameter at base of heads
13. Field peas, 3" diameter at tie
14. 50lb bale of mixed hay
15. 50lb bale of any other variety to be named
16. Rye, 3" diameter at the head

SECTION 5B

FRUITS

- *All fruits must be shown in natural state and not polished except for apples and*
 - *Pears and should be named*
 - *All fruits will be judged according to the Standards of Perfection as issued by the BC Ministry of Agriculture*
 - *AOV – Any other variety, please name the variety*
1. Apples, Macintosh, Red, 5
 2. Apples, Wealthy, 5
 3. Apples, Delicious, 5
 4. Apples, King, 5
 5. Apples, Northern Spy, 5
 6. Apples, Green, 5
 7. Apples, Jonathan, 5
 8. Apples, Duchess, 5
 9. Apples, Transparent, 5
 10. Apples, Crimson Beauty, 5
 11. Apples, Gravenstein, 5
 12. Apples, other varieties named, 5
 13. Blackberries, plate of 12
 14. Boysenberries, plate of 12
 15. Strawberries, plate of 12
 16. Raspberries, plate of 12
 17. Any other berry not named above, plate of 12
 18. Crab Apples, Hyslop, 12
 19. Crab Apples snow, 12
 20. Grapes, Green mature, 2 bunches
 21. Grapes, concord, 2 bunches
 22. Grapes, Seedless, 2 bunches
 23. Nuts, Filberts, 12
 24. Nuts, Walnuts, 12
 25. Pears, Bartlett, 5

SECTION 5B

FRUITS

26. Pears, Anjou, 5
27. Pears, Flemish Beauty, 5
28. Pears, other variety named, 5
29. Plums, Peach, 12
30. Plums, Greengage, 12
31. Plums, Bradshaw, 12
32. Plums, Sampson, 12
33. Plums, Gold, 12
34. Plums, other varieties named, 12
35. Prunes, Italian, 12
36. Prunes, French, 12
37. Peaches, 5
38. Nectarines, 5
39. Watermelon, 1
40. A collection of fruits, 8 varieties named
41. Most unusual fruit display, grown inside a bottle
42. Any other

SECTION 5C

HORTICULTURE GENERAL

- *All produce must be grown by the exhibitor*
 - *Entries will be judged by Standard of Perfection as issued by the BC Ministry of Agriculture*
 - *All beans, peas must have stems attached*
 - *All stalks of beets, carrots, parsnips, should be cut to 1" of stalk*
1. Beans, Bush, wax, 6 pods
 2. Beans, Scarlet Runner, 6 pods
 3. Beans, Broad or Windsor, 6 pods
 4. Beans, pole or climbing, 6 pods
 5. Beans, bush, 6 pods
 6. Beets, cylindrical, 5 roots
 7. Beets, 5 roots
 8. Beets, pickling, 5 roots
 9. Broccoli, 2 heads
 10. Brussel Sprouts, 12 sprouts
 11. Cabbage, green large, with outer leaves, 2
 12. Cabbage, red with outer leaves, 2
 13. Cabbage, Savoy, 2 heads
 14. Carrots, Ox heart, short, under 4", 5
 15. Carrots, intermediate, 4" – 6", 5
 16. Carrots, long, 6" and over, 5
 17. Carrots, white, 5
 18. Carrots, any other colour, 5
 19. Cauliflower, 2 heads
 20. Celery, 2 heads
 21. Citron, 2 each

HORTICULTURE & FLORICULTURE

SECTION 5C

HORTICULTURE GENERAL

22. Corn, (to be stripped), 6 ears
23. Cucumber, dill, 4", 6
24. Cucumber, Long English, 2
25. Cucumber, pickling, (2-3"), 6
26. Eggplants, 3
27. Exotic Vegetable
28. Field Pumpkin, grooved stems, (heaviest)
29. Field Pumpkins, (heaviest)
30. Garden Cucumbers, 2
31. Garlic, Elephant, 4 bulbs
32. Garlic, hardneck, porcelain, 4 bulbs, variety named
33. Garlic, hardneck, purple stripe, 4 bulbs any variety
34. Garlic, hardneck, Rocambole, 4 bulbs, variety named
35. Garlic, other, 4 bulbs
36. Garlic, softneck, 4 bulbs, any variety named
37. Giant Atlantic Pumpkin
38. Green onions, 6
39. Kale, 2 heads
40. Kohlrabi, (3"), 3 heads
41. Leeks, 3
42. Lemon Cucumbers, 2
43. Lettuce, Endive, 2 heads
44. Lettuce, Head, 2 heads
45. Lettuce, Romaine, 2 heads
46. Muskmelon, 2 each
47. Onion, yellow or brown (up to 3"), 5
48. Onions, large (over 4"), 5
49. Onions, Multipliers, 12 each
50. Onions, pickling, (approx. 7 5"), 12
51. Parsley, 1 bunch with 12 stems
52. Parsnips, 3 roots
53. Peas, 6 pods
54. Peppers, any other, 3 with stems
55. Peppers, Bell, green, 3 with stems
56. Peppers, Bell, red, 3 with stems
57. Peppers, Bell, yellow, 3 stems
58. Peppers, Cayenne, 3 with stems
59. Peppers, Habanero, 3 with stems
60. Potatoes, early variety, named, 5
61. Potatoes, late variety, named, 5
62. Potatoes, Norland, 5
63. Potatoes, Pontiac, 5

SECTION 5C

HORTICULTURE GENERAL

64. Potatoes, Russet, 5
 65. Pumpkins, pie or sugar, 2
 66. Pumpkins, smallest, 2
 67. Radishes, (bunched with tops and roots) 12 each
 68. Rhubarb, 5 stalks
 69. Squash, Acorn, 2
 70. Squash, Butternut, 2
 71. Squash, heaviest, 2
 72. Squash, Hubbard, golden, 2
 73. Squash, Hubbard, green, 2
 74. Squash, Patty Pan, 2
 75. Squash, Spaghetti
 76. Swiss Chard, 2 heads
 77. Tomatillos, 5
 78. Tomatoes, Cherry, attached, 12
 79. Tomatoes, green stems attached, 5
 80. Tomatoes, red, stems attached, 5
 81. Tomatoes, yellow, stems attached 5
 82. Turnips, summer, (approx. 5") 3
 83. Turnips, swede (approx. 5") 3
 84. Zucchini
 85. Any other Vegetable
 86. Best display of freak potatoes (1- 6"), no toothpicks
 87. Garden Display, 3' x3', at least 7 varieties, named
 88. Roots Cellar Collection, exhibited in a suitable container, ie: washtub, wooden box, 4 varieties, 2 of each, named
 89. Vegetable Sculpture person, animal or imaginative object made from a new vegetable
 90. Collection of fresh herbs, 5 kinds named, displayed in water
 91. Giant Pumpkin - **Jake Van Kotten Memorial NEW**
- Prize Money: 1st Place - \$100, 2nd - \$50, 3rd - \$25**

SECTION 5D

FLORICULTURE

- *Note: Note: see general rules regarding set up times*
- *Exhibitors may enter more than one entry class, providing each entry is a different class*
- *No placing of flowers while the judges are in the building*
- *CVA- Colour variation allowed*

SECTION 5D - 01

GLADIOLI

1. Single, with foliage
2. Three spikes, 3 different colours
3. Three spikes, one colour

SECTION 5D – 02

DAHLIAS

1. Single bloom, over 3"
2. Single bloom, under 3"
3. Two blooms, one variety, over 3"
4. Two blooms, one variety, under 3"
5. Three blooms, CVA over 3"
6. Three blooms, CVA 3" and under



SECTION 5D – 03

OTHER CUT FLOWERS

1. Antirrhinum (snapdragons) 6 spikes
2. Asters, single, 5 blooms, any colour
3. Asters, double blooms, 5 blooms in one vase, CVA
4. Bachelor Buttons, 5 blooms
5. Carnations, 6 blooms
6. Chrysanthemums, dis budded, 1 bloom, any colour
7. Hydrangea, 1 stem
8. Lily, variety named, 1 stem
9. Marigolds, dwarf French, 9 blooms, any one variety, in 1 vase
10. Nasturtium, 5 blooms
11. Pansies, 6 blooms, 1 vase CVA
12. Petunias, single, 6 blooms, 1 vase CVA
13. Petunias, double, 6 blooms, 1 vase CVA
14. Roadside flower arrangement, 1 species
15. Rose, hybrid tea, 6 blooms to a bowl, CVA
16. Rose, hybrid tea, 1 bloom any colour
17. Roses, polyanthus, 3 cuts, in 1 vase CVA
18. Stocks, 6 stems, in 1 vase CVA
19. Sweet Peas, 10 stems, 5 each, of 2 varieties
20. Sweet Peas, 12 stems, mixed, 1 vase
21. Zinnias, 9 blooms, permilla (cut and come again) in 1 vase
22. Zinnias, 5 blooms, large, 1 vase
23. Any cut flower not named, vase of 4 blooms
24. Cut flowers, arranged in unusual container
25. One vase, any cut flower not listed above

SECTION 5D – 04

POTTED PLANTS

1. Pot of Herbs
2. One pot flowering
3. African Violets, one pot
4. One pot of foliage
5. One pot of ferns, (not asparagus ferns)
6. One pot of cactus
7. One pot of succulents
8. One flowering tuberous Begonia
9. One hanging basket, foliage
10. One hanging basket, flowering
11. Collection of house plants flowering or foliage, mix is allowed, 6 to 9 pots
12. Collection of house plants, cactus 6 to 9 pots
13. Plant grown in an unusual container, not large

SECTION 5D – 05

MISCELLANEOUS

1. Table center, under 6" high
2. Table center, from 6-12" high
3. Terrariums
4. Dried plant materials, grasses, or seed pods, one container to be judged for number of varieties and artistic arrangement
5. Dried flower arrangement as #4 using materials such as grasses, or seed pods
6. Fairy Garden, not bigger than 30cm by 50cm
7. Sweeter than wine flower arrangement in a wine bottle
8. Tom Thumb miniature flower arrangement
9. Any other not mentioned above

SECTION 5D – 06

GROUP ENTRY

1. Group entry

All entry fees: \$3.00 per class Prize

Money for all classes:

1st - \$15.00, 2nd - \$10.00 3rd - \$7.00

1. a) 8'x 8' space allotted.
2. b) Must be grown by the exhibitor(s).
3. c) The display must consist of 10 horticulture and floriculture products including 2 varieties of potatoes, 1 fruit, flowers, grains or farm products may be included.

CULINARY ARTS

MOST POINTS IN HOME COOKING CERTIFICATE BEST ENTRY IN HOME BAKING CERTIFICATE

SECTION 5E – 01

BREADS, BUNS & MUFFINS

1. White Bread, ½ loaf
2. White Bread Maker, ½ loaf
3. Brown Bread, ½ loaf
4. Brown Bread maker, ½ loaf
5. Fruit Bread, ½ loaf
6. Fruit Bread maker, ½ loaf
7. Swedish tea Ring, ½ loaf
8. Milk Rolls, 2 of uniform size
9. Cinnamon buns, 2 of uniform size
10. Muffins, 2 plain or bran
11. Muffins, 2 with fruit
12. Muffins, any other
13. Baking Powder Biscuits, 2 of uniform size
14. Scones, 2 of uniform size
15. Lemon Loaf, ½ loaf
16. Zucchini loaf, ½ loaf
17. Banana Bread, ½ loaf
18. Loaf, other than above, ½ loaf
19. Bannock

SECTION 5E – 02

CAKES & COOKIES

1. White, single layered cake, iced or frosted 3"x3" square or pie shaped piece
2. Chocolate, double layer pie shaped piece
3. 2 of each,
4. Angle Food Cake, not iced, ½ cake
5. Cup Cakes, 2 judged on decoration only
6. Fruit Cake, dark or light, ½ loaf, recipe included
7. Chocolate brownies, 2 pieces, 2"x2"
8. Matrimonial Cake, raisin or date, 2 pieces 2"x2"
9. Rolled Cookies, 2 kinds, 2 each
10. Dropped Cookies, not pressed, 3 kinds, 2 each
11. Shortbread, 2 pieces, or ½ cake
12. Plate of fancy cookies, 3 kinds, 2 each
13. Non-bake cookie, 1 kind, 2 each
14. Non-bake square; i.e.: rice krispies, 2 each
15. Packed lunch box snack,
16. Giant Decorated cookie, 1 only edible decorations,
17. Gluten-Free Cookies, 2 kinds, 2 of each,
18. Sugar-Free or Sugar alternative, cookies 2 kinds, 2 of each,
19. Specialty Baking ie: recipes made with organic products, or other, including recipe with entry,
20. Any other.



SECTION 5E – 03

PASTRY

All pie entries, 2 slices only on a white paper plate, wrapped in plastic wrap

1. Apple Pie, 2 crusts,
2. Raisin Pie, 2 crusts,
3. Pumpkin Pie,
4. Wild berry Pie, (blackberry, Salmon berry)
5. Fruit/berry Pie,
6. Lemon Meringue Pie,
7. Butter Tarts, 2,
8. Variety of tarts, 3 kinds, 2 of each
9. Any Other.

SECTION 5E – 04

SPECIALTY

1. "My Picnic Basket" – A picnic lunch for 2 Served in a basket. Should be nutritious, environmentally friendly and appetizing.
2. Decorated Cake, to be judged on the theme of the fair and presentation only, inedible accessories allowed
3. Dainties on a Doily. – A plate of at least 3 various kinds of dainties that would be served to guests. To be judged on appearance, taste, texture, of dainties, as well as overall creativity, and presentation.
4. Special Sandwich – sandwiches don't have to be made out of bread. Served on a plate may include garnishes, to be judged on nutritional value and presentation.

SECTION 5E – 05

CANDY

1. Chocolate fudge, 4 pieces (no nuts)
2. Peanut brittle, 4 pieces
3. Homemade candy, 4 pieces
4. Popcorn – Coloured, 2 cup bowl
5. Popcorn – Carmel, 2 cup bowl
6. Granola Snack Mix
7. Any Other
8. Maple fudge, 4 pieces

1. Apple sauce, 1 jar any size
2. Fruit syrup, 1 jar any size, named
3. Fruit, 3 varieties, 1 jar any size
4. Fruit, 1 jar any size
5. Fruit jelly, 2 varieties, any size
6. Fruit jelly, 1 jar any size
7. Fruit jam, 2 varieties, any size
8. Fruit jam, 1 jar any size
9. Vegetables, 3 varieties, 1 jar each
10. Vegetables, 1 jar
11. Exotic vegetables, 1 jar
12. Canned soup, 1 jar any size
13. Mincemeat, 1 jar any size
14. Chili sauce, 1 jar any size
15. Meat, 1 jar any size
16. Chicken, 1 jar any size
17. Fish, 1 jar any size
18. Canned smoked salmon, 1 jar any size
19. Sweet pickles, 1 jar any size
20. Pickled beets, 1 jar any size
21. Pickled onions, 1 jar any size
22. Mixed mustard pickles, 1 jar any size
23. Cucumber relish, 1 jar any size
24. Other relish; 1 jar any size
25. Homemade mustard, 1 jar any size
26. Pickled garlic, 1 jar any size
27. Pickled beans, 1 jar any size
28. Pickled carrots, 1 jar any size
29. Pickled Eggs, 1 jar
30. Salsa, 1 jar
31. Antipasto, 1 jar
32. Any other variety of pickles, 1 jar
33. Vinegar, fruit or herb, 1 jar named
34. Emergency Dinner, consisting of 5 home canned items, either all quarts or all pints, which would make a complete dinner
35. Any other item not mentioned above
36. Dill Pickles, 1 jar, any size



SECTION 5F – 02

EGGS

1. Duck eggs, 12
2. Eggs, grade A large, white, 12
3. Eggs, grade A large, brown, 12
4. Eggs, bantam, 12 Exotic eggs, 2 kinds, 4 each



SECTION 5F – 03

SPECIALTY

1. Cream, hand skimmed, 1 pints
2. Homemade laundry soap, 2 bars
3. Homemade hand soap, 2 bars
4. Homemade candles
5. Homemade lotions



SECTION 5F – 04

DEHYDRATED

1. Sundried fruits, 6 pieces
2. Sundried vegetables, 6 pieces
3. Dehydrated fruit, 6 pieces
4. Dehydrated vegetables, 6 pieces
5. Fruit leather, 2"x4" pieces rolled, 2 pieces
6. Dehydrated herbs
7. Dehydrated beef or turkey jerky

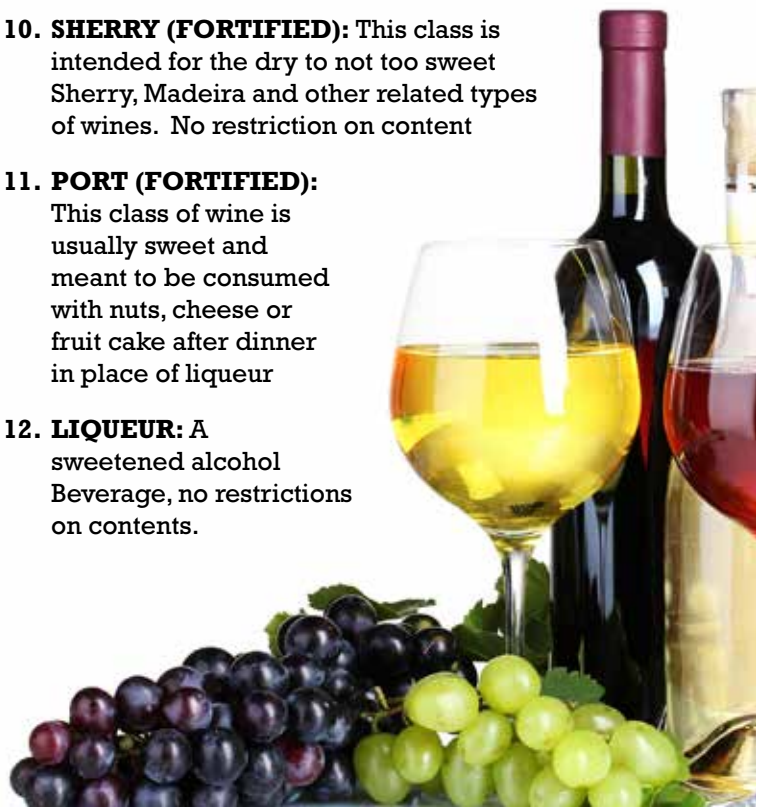


MOST POINTS IN WINE & BEER TROPHY

SECTION 5G – 01

WINE, BEER & LIQUEURS

- *All wines must be made by the exhibitor by the process of fermentation.*
 - *Maximum of 3 entries per exhibitor In each class; each entry of different ingredients, or in the case of grapes, of different varieties. Please name.*
 - *All entries will be grouped and judged by ages as follows:*
 - » *Open, 19 years and over – O*
 - » *Senior Citizen, 65 years and over –SC*
1. **RED WINE, DRY GRAPE:** A red wine to be consumed with food. This wine is usually free of residual sugar, although A well balanced and aged wine will have some glycerin and soft- ness that could be mistaken for sweetness
 2. **RED WINE, DRY TO MEDIUM, NON-GRAPE:** A red wine to be consumed with without food. The sugar content may be from dry to medium but not excessively sweet. Any non-grape product that will produce a red wine
 3. **WHITE WINE, DRY, GRAPE:** A white wine to be consumed with food. This wine is usually free of residual sugar; it will vary from dry to off dry
 4. **WHITE WINE, DRY TO MEDIUM, NON-GRAPE:** A white wine to be consumed with or without food. The sugar content may be from dry to medium, but not excessively sweet. Any non-grape product that will produce a clear golden colour is acceptable. This wine should have a definite fruit aroma
 5. **WHITE WINE, MEDIUM, GRAPE:** A white wine to be consumed with or without food. Primarily a social style wine Sugar content can vary from off dry to slightly sweet as found in some German style wines.
 6. **ROSE WINE, GRAPE:** A light refreshing dry to off dry, patio style wine with grape variety characteristics. colour may range from pale to light red, and orange tinge is acceptable
 7. **ROSE WINE, NON-GRAPE:** A light refreshing dry to medium wine with definite fruit flavoured aromas. Colour may range from pale pink to light red, an orange tinge is acceptable
 8. **SPARKLING WINE:** A wine that can be consumed alone or with food. Wines sparkled by the method champenoise will have a distinctive yeasty flavor, while those made by the carbonation method tend to have fruitier characteristics. Sugar content may be from dry to sweet with a wide spectrum of colour. Sediment is not acceptable. No restriction on contents, but grapes are preferred
 9. **MISCELLANEOU SWEET WINE NOT FORTIFIED:** A wine consumed with dessert course of a Meal. This wine should be sweet and luscious with sufficient acid to keep it from Being cloying. There should be no astringency and the alcohol developed by fermentation. No Restriction on contents with the except that NO FORTIFICATION is allowed for this class
 10. **SHERRY (FORTIFIED):** This class is intended for the dry to not too sweet Sherry, Madeira and other related types of wines. No restriction on content
 11. **PORT (FORTIFIED):** This class of wine is usually sweet and meant to be consumed with nuts, cheese or fruit cake after dinner in place of liqueur
 12. **LIQUEUR:** A sweetened alcohol Beverage, no restrictions on contents.



SECTION 5G – 02

BEERS, CIDERS & COOLERS

1. **CIDER:** As apple or pear-based sparkling beverage. Should be well balanced with no oxidation colourless to golden, dry to semi-sweet, with 4 to 6 % alcohol
2. **PALE BEER, ALE/LAGER:** Colour may be straw to golden but not amber. There should be a good hop aroma with malt in balance with bitterness. Examples: are Blond lager, Pale or Light Ale and Bitter Ales
3. **AMBER BEER, ALE/LAGER:** Colour may be from light amber to dark amber with copper tone. Medium to full body, medium to high hop bitterness and medium to assertive aroma. Some styles are English Old Ale, Dark Ale, Indian, American style ales
4. **DARK BEER, ALE/LAGER:** Colour may be dark amber to dark brown with red to copper tones. Dry to sweet and generally smoother, heavier body and more flavorful than pale beers, Examples: Dark Lager, Brown Ales, Mile Ale and Porter
5. **STOUT:** Colour may be from very dark Brown or black. Full flavored with smooth finish. Dry to sweet, medium to high hops. Examples: Russian Imperial Stout, Guinness, and Murphy's
6. **COOLERS and OTHERS.**



SECTION 5G – 03

HONEY

Exhibits of honey, wax and granulated honey must be the product of the Exhibitor. Honey combs should be wrapped in transparent protective covering.

1. Liquid Honey, white
2. Liquid Honey, golden
3. Liquid Honey, amber
4. Honey Comb, 1 shallow frame
5. Honey Comb, 1 standard deep frame
6. Honey Comb, 4 Sections (plastic or wood)
7. Chunk Honey, 3 jars
8. Granulated Honey, 3 jars



SECTION 5G – 04

LARGE LEAF MAPLE SYRUP

1. Light Coloured Maple Syrup
2. Medium Coloured Maple Syrup
3. Dark Coloured Maple Syrup

NEEDLECRAFT

MOST POINTS IN NEEDLECRAFT PLAQUE

- *No prize money will be awarded for any article that has been awarded at previous Fairs.*
- *Articles soiled or defaced by wear will not be judged*
- *When there is only one entry in the class the articles must be first class standards to be awarded the prize*

SCORE CARD FOR CLOTHING

General Appearance (40 points)

Neatness: is the article clean, well pressed 10

Design: is the design suitable to material and kind of garment 10

Colour: is the colour pleasing and appropriate 10

Trimming: is the trimming suitable to the garment 10

Material (15 points)

Suitability: is the material a good choice for the article 5

Harmony: do fabrics, thread and trimming harmonize 5

Quality: is the quality suitable for the purpose 5

Workmanship (60 points)

Cutting: is the cutting accurate 10

Sewing: is the stitching straight with well adjusted tension and suitable length in stitches 10

Are seams even width and suitable to material used 10

Are hems, bindings, and facing smooth? Do they lie flat and are they even in width? 10

Are seams finishes, hem etc. properly and neatly done 10

Are buttons properly sewn on: button holes, zippers, pockets, etc., properly and neatly made 10

SECTION 5K – 01

SEWING

Infant and children's sizes

1. Baby outfit, minimum 2 pieces
2. Christening gown
3. Skirt
4. Blouse or shirt
5. Pants, overalls or shorts
6. Casual type dress
7. Semi – formal type dress
8. Sleepwear
9. Coat, jacket or outerwear
10. Outfit coordinated
11. Themed wear apparel ie: Halloween, dance etc.
12. Any other article not mentioned above

Adult Sizes: Classes 13-27

13. Apron
14. Ladies, blouse or top
15. Ladies, pants or shorts
16. Skirt
17. Dress
18. Formal gown or dress outfit
19. Coat or jacket
20. Suit, minimum or 2 pieces
21. Sleepwear or other lounge wear
22. Vest
23. Men's shirt
24. Men's pants or shorts
25. hat or accessory
26. themed wearing apparel, Halloween or dance
27. Ethnic wearing apparel, any size
28. School project, clothing
29. School project, non-clothing
30. Purse or bag
31. Pillow or cushion
32. Stuffed toy or animal
33. Stuffed doll
34. Doll clothes, displayed on doll
35. Practical household article
36. Decorative household article
37. Tree ornaments, set of 3
38. Christmas stocking
39. Christmas tree skirt
40. Pot holder, 1 only
41. Fidget Blanket
42. Produce Bags
43. Pet wear
44. Hand Stitched Item
45. Any other article not mentioned above



SECTION 5K – 02

KNIT FABRIC

1. Slacks or shorts
2. T-shirt or sweatshirt
3. Top
4. Bathing suit
5. Lingerie
6. Polar fleece garment
7. Hat or small accessory
8. Any other article not mentioned above

SECTION 5K – 03

CROCHETING WITH COTTON

1. Original design
2. Bedspread
3. Tablecloth, under 36"
4. Tablecloth, 36" and over
5. Dresser or table runner
6. Dresser Set, 3 pieces
7. Doily 8" to 12"
8. Doily 13" to 24"
9. Doily 25" to 36"
10. Edging on any article, ie: pillowcases
11. Cushion or pillow
12. Doll clothes, minimum 2 articles on doll
13. Snowflakes, set of 3
14. Tree ornaments, set of 3
15. Seasonal decoration
16. Tatting, any item
17. Tatting, edging
18. Bobbin lace edging, mounted
19. Bobbin lace, motif or bookmark
20. Crocheted item with other needlework technique
21. Any other article not mentioned above

SECTION 5K – 04

CROCHETING WITH YARN

Children's sizes: Classes 1-8

1. Baby set, 3 or more pieces
2. Baby shawl or blanket
3. Booties or slippers
4. Bonnet or hat
5. Sweater
6. Socks
7. Slippers
8. Accessory ie: toque or scarf

Adult Sizes: Classes 9-13

9. Sweater
10. Vest or shell
11. Cardigan
12. Slippers
13. Accessory ie: hat, mitts etc.

Miscellaneous

14. Afghan or bedspread
15. Amigurumi Toy or Doll, under 6"
16. Amigurumi Toy or Doll over 6"
17. Bag
18. Cushion or pillow
19. Doll or toy
20. Doll outfit, on doll
21. Granny Square, 2 blocks, 2 patterns 2 patterns
22. Potholders or dishcloths, set of 2
23. Any crocheted item, original design
24. Collection of 4 different types of crocheted articles, ie: slippers, hats, mitts, sweater
25. Any Crocheted item, not mentioned above



NEEDLECRAFT

SECTION 5K – 05

KNITTING

Infant up to 1 year

1. Baby set, 3 or more pieces
2. Sweater only
3. Booties or bonnet
4. Baby blanket
5. Dress, fine yarn
6. Dress, any yarn
7. Hat/Toque
8. Socks
9. Sweater, plain, stocking stitch
10. Sweater, figure or animals
11. Sweater, fancy stitch
12. Sweater, or vest, fairisle
13. Sweater, heavy yarn, plain
14. Sweater, heavy yarn, fancy design

Children 2 to 10 years

15. Sweater, plain stocking stitch
16. Sweater, figure or animals
17. Sweater, fancy stitch
18. Sweater, or vest, fairisle
19. Sweater, heavy yarn, plain
20. Sweater, heavy yarn, fancy design
21. Socks, plain knit
22. Socks, patterned or textured or colourwork
23. Dress, fine yarn
24. Dress, any yarn
25. Matching toque or scarf or mitts minimum of 2 pieces
26. Hat/Toque
27. Scarf/Cowl
28. Any other

Adult Sizes

29. Sweater, fine yarn, plain
30. Sweater, fine yarn, patterned ex: fairisle
31. Sweater, fine yarn, textured ex: cable
32. Sweater, medium to bulky yarn plain
33. Sweater, medium to bulky yarn, patterned
34. Sweater, medium to bulky yarn, textured
35. Sweater, knit from homespun yarn
36. Sweater own design
37. Matching toque or scarf or mitts minimum of 2 pieces
38. Hat/Toque
39. Mitts/Gloves
40. Scarf/Cowl
41. Socks, plain knit
42. Socks, patterned or textured or colourwork
43. Shawl, fine yarn
44. Shawl, any yarn
45. Any other

Miscellaneous

46. Slippers, any size

SECTION 5K – 05

KNITTING

47. Afghan or bedspread, fine weight yarn
48. Afghan or bedspread, medium weight yarn
49. Pillow or cushion
50. Doll outfit on a doll
51. Doll or toy
52. Potholder or dishcloth or kitchen towel, set of 2
53. Seasonal decoration
54. Tree ornaments, set of 3
55. Collection of 4 different types of knitted articles ex: slippers, toque, cowl, sweater etc.
56. Arm/Finger knitting, 1 item
57. Any other

Machine Knitting

58. Children's wear, standard
59. Children's wear, bulky
60. Adult wear, standard
61. Adult wear, bulky
62. Afghan or bedspread
63. Any other

Loom Knitting

64. Toque
65. Scarf or Cowl
66. Afghan or Bedspread
67. Any other

Knitted Felting

68. Felted Slippers
69. Felted hat
70. Felted bag
71. Any other

SECTION 5K – 06

NEEDLEWORK

1. Pillowslips, embroidered, 1 pair
2. Dresser Set, embroidered, 3 pieces
3. Tablecloth, embroidered, 36"x54"
4. Tablecloth, embroidered, over 54"
5. Embroidered picture, under 12"
6. Embroidered picture, 12" and over
7. Embroidered item original design
8. Embroidery item not previously mentioned
9. Shadow embroidery, any article
10. Cutwork embroidery, any article
11. Brazilian embroidery, any article
12. Ribbon embroidery, any article
13. Crewel embroidery, any article
14. Machine embroidery, any article
15. Crewel work, using wool only
16. Smocking
17. Redwork
18. Seasonal embroidery
19. Embroidery ornaments, set of 3
20. Needlework picture

SECTION 5K – 06

NEEDLEWORK

21. Petit point
22. Plastic canvas, any article
23. Plastic canvas, ornaments, set of 3
24. Hardanger, small item
25. Hardanger, large item
26. Counted cross stitch, design under 14"
27. Counted cross stitch, design 14" and over
28. Counted cross stitch, ornaments, set of 3
29. Counted bead work
30. Combination counted cross stitch together with any other needlework technique
31. Unframed cross stitch
32. Any other form of needlework
33. Collection of 4 different needlework items
34. Swedish weaving, large item ie: afghan
35. Swedish weaving, small item ie: placemat
36. Swedish weaving, any other
37. Needle felted article
38. Needle felted 2D article
39. Needle punch, from a kit
40. Needle punch, original design
41. Rug hooking, from a kit
42. Rug hooking, original design
43. Slow Stitch Fabric Collage

SECTION 5K – 07

WEAVING AND SPINNING

1. Garment
2. Item not made up to maximum width 24"
ie: scarf, blanket, etc.
3. Item not made up minimum width 24"
ie: shawl, blanket etc.
4. Item made up ie: garment, cushion etc.
5. Wall hanging, tapestry or rug
6. Woven band or braided cord
ie: inkle card weaving etc.
7. Item of handmade felt
(non-woven or felled fabric, woven or knitted)
8. Basket, any technique any material
ie: reed, pine needles, willows etc.
9. Rag Weaving, the "rags" may be from new or recycled fabric
10. Item for beginner (someone who has been weaving for one year or less)
11. Any item not mentioned above
12. Spinning, single ply yarn
13. Spinning, two ply yarns
14. Spinning, other fibre
15. Spinning, fancy yarn, any fibre or combination
16. 1 Yarn dyeing, commercial dye
17. 1 Yarn dyeing, natural dye (label)
18. Any item not mentioned above

NEEDLECRAFT



NEEDLECRAFT

SECTION 5K – 08

QUILTING

Note: Quilts in classes 1 to 7 must be a minimum size of 60" x 72"

1. Quilt, machine quilted on regular machine
2. Quilt, machine quilted on framed machine hand guided
3. Quilt, machine quilted on framed machine, computerized
4. Quilt, commercially quilted, please acknowledge quilter
5. Quilt, hand quilted
6. Quilt, work of one person, combination of techniques
7. Quilt, appliqued, work of one person
8. Quilt, work of more than one person
9. Quilt, rag, any size
10. Quilt, English paper pieced, any size
11. Crazy quilt, any size
12. Quilt, original design, any size
13. Any quilt made with re-cycled materials, state origin
14. Lap or crib quilt, from a panel
15. Lap or crib quilt, appliqued
16. Lap or crib quilt, hand quilted
17. Lap or crib quilt, quilted on regular machine
18. Lap or crib quilt, framed machine, hand guided
19. Lap or crib quilt, framed machine computerized
20. Lap or crib quilt, commercially quilted, please acknowledge quilter
21. Small or wall hanging, hand quilted
22. Small or wall hanging, machine quilted
23. Small or wall hanging, paper pieced
24. Small or wall hanging, English paper pieced
25. Small or wall hanging, commercial design, Embellished

SECTION 5K – 08

QUILTING

26. Small or wall hanging, machine embroidered
27. Small or wall hanging, fibre art
28. Small or wall hanging, applique
29. Small or wall hanging, wool applique
30. Miniture quilt, max. 24" finished, blocks 4" or less
31. Any quilted garment
32. Quilted purse or bag
33. Holiday, seasonal boutique, ie: tree skirt, table runner
34. Home boutique: place mats, pot holders, min of 2, or or table runner,
35. Pillow, not from panel
36. Mug rug or postcard
37. Machine stitched quilt block, 12"x12", not quilted, mounted on one edge
38. Hand stitched quilt block, 12"x12", not quilted, mounted on one edge
39. Paper pieced quilt block, 12"x12", not quilted, mounted on one edge
40. Appliqued quilt block, 12"x12", not quilted, mounted on one edge
41. Any other quilted article not mentioned



SECTION 5L – 01

CLAYWORK & SCULPTURE

1. Ceramics, glaze for utility use
2. Ceramics, glaze for decorative use
3. Ceramics, stained, decorative use
4. Ceramics, tree ornaments, set of 3
5. Porcelain doll
6. Pottery, any hand-built piece
7. Pottery, any piece of sculpture
8. Pottery, decoration, glaze, design etc.
9. School project
10. Sculpture, playdough or plasticine
11. Dough tree ornaments, set of 3
12. Fimo or Polymer clay object
13. Any other item not mentioned above

SECTION 5L – 02

WOOD CRAFT

1. Wood carving, 3D sculpture
2. Wood carving, wall plaque etc.
3. Wood turning
4. Wood inlay
5. Wood marquetry
6. Scroll saw fretwork
7. Item made from a burl
8. Furniture
9. Wooden toy, puzzle or game
10. Wooden toy, with moving parts
11. Mini reproduction, car, ship models
12. Natural wood shape, finished
13. Birdhouse -functional
14. Birdhouse -decorative
15. Dollhouse
16. Dollhouse furniture
17. Christmas tree ornaments, set of 3
18. Twig Art, 1 item, chair, trellis etc.
19. Item made from Cedar Bark -specify
20. Wood burning item
21. Wooden stick construction
22. Traditional tool or weapon
23. Wooden construction from a kit
24. School Project
25. Extra-large woodcraft item
26. Hiking Walking Stick
27. Any wood project not mentioned above

SECTION 5L – 03

ROCK WORK

1. Hand cut
2. Polished
3. Unpolished
4. Stone jewelry – 3 pieces
5. Stone carving
6. Rock Critter
7. Rock & Gem collection
8. Mosaic stepping stone
9. Any item not mentioned above

SECTION 5L -04

DECORATIVE PAINTING

1. Glass item
2. Metal item
3. Small wood item up to 12"
4. Large wood item 12" and over
5. Mandela Rock painted item NEW
6. Claypot
7. Seasonal item
8. Tree ornament -set of 3
9. Wearable item, fabric
10. Decorative item, fabric
11. Silk painting
12. Stenciled article
13. Batik, any item
14. Painted ceramic tile
(minimum 6"x6" and up to 12"x12")
15. Diamond Painting
16. Any item not mentioned above.

SECTION 5L – 05

MODELS

1. Any plastic or resin model from a kit
2. Model scene, not building blocks 12"x12",
securely mounted
3. Remote control model
4. Powered model
5. Rocket model
6. Model collection of 3 items
7. Miniature reproduction, any or mixed

SECTION 5L – 06

COLLECTIONS

*Limited to 2 feet square and must be securely mounted.
Items 6,7,8 are open to non-Indigenous as well.*

1. Memento, or souvenir collection
2. Book, form, cards, coins, stamps
3. Doll or stuffed animals, maximum of 6
4. From nature ie: leaves, insects
5. Collectibles, minimum of 6

HOBBIES & CRAFTS

SECTION 5L – 07

FLOWER CRAFT

1. Artificial bouquet in a vase
2. Dried flower or artificial saw or wreath
3. Dried flower arrangement 12" and under
4. Dried flower arrangement 12" and over
5. Artificial arrangement, 12" and under
6. Artificial arrangement, 12" and over
7. Artificial corsage or boutonniere
8. Pressed flowers any article
9. Artificial arrangement for dining
10. Artificial arrangement for dining "theme of the fair"
11. Any item not mentioned above

SECTION 5L – 08

NOVELTY

1. Fabric covered photo album or picture frame or similar
2. Mod Podge Item
3. Create an ugly Christmas Sweater
4. Beaded craft
5. Beaded tree ornament -set of 3
6. Jewelry, any item
7. Felt tree ornament, set of 3
8. Dream catcher
9. String Art
10. "A Warm Welcome"
something to adorn your door
11. Lawn ornament
12. Clay pot creation
13. Molded candle, poured
14. Beeswax candle, rolled
15. Dyed egg
16. Decorated egg
17. Fridge magnet
18. Father Christmas, under 16"
19. Father Christmas, 16" and over
20. Christmas wall hanging
21. Macrame - jewelry
22. Macrame - plant hanger
23. Macrame - wall hanging
24. Puppet
25. Wind Chime
26. Design & build a gift basket for any occasion.
Basket may contain purchased items
27. Christmas tree ornaments, any medium
28. Wreath, maximum of 12" in diameter, made from recycled materials
29. Table Center -Christmas theme

SECTION 5L – 08

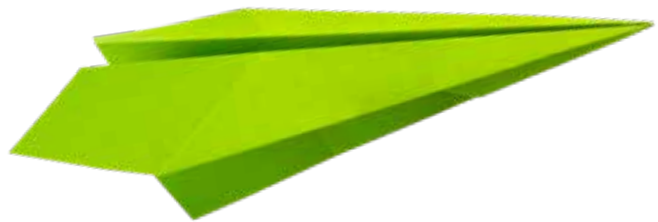
NOVELTY

30. Something useful from something useless
31. Tied Flies Mounted 2
32. 3D Printer Project original design or indicate source
33. Any item not mentioned above

SECTION 5L – 09

PAPER CRAFT

1. Paper Mache
2. Paper tole
3. Paper cast item
4. Handmade paper item
5. Paper plate art
6. Decoupage
7. T-bag folding or origami type card
8. Embossed card
9. Embellishment on a card
10. Stamped greeting card
11. Handmade calendar
12. Computer calendar
13. Paper airplane
14. School project
15. Educational Display
16. Vision Board ex: a collage of recipe cards, goals, decorations
17. Art journal
18. Any item not mentioned above



SECTION 5L – 10

GLASS WORK

1. Suncatcher
2. Stained glass, lead cane
3. Stained glass, copper foil
4. Etched
5. Free standing figure
6. Lampshade
7. Box shaped ie: tray, terrarium, etc.
8. Recycled materials, article using glass
9. Any item not mentioned above

SECTION 5L – 11

METAL WORK

1. Functional
2. Ornamental
3. Metal punch, any article
4. Windchime
5. Assembled art – sculpture
6. Recycled
7. School project
8. Any item not mentioned above



SECTION 5L – 12

SCRAPBOOKING

1. Themed scrapbook
2. Non-themed scrapbook
3. Creative scrapbook or photo album approx. 5"x7"
4. Creative scrapbook or photo album approx. 8"x11"
5. Single memory page layout
6. Memory pages, no more than 2 pages any theme
7. A scrapbook depicting "your family heritage"
8. Any item not mentioned above



SECTION 5L – 13

LEGO OR LEGO LIKE MODELS

1. Lego or Lego like, 1 article no kits
2. Lego or Lego like, 1 article from a kit
3. Lego or Lego like, model scenery not exceeding 1ft x 1ft, not a kit
4. Lego or Lego like, model scenery not exceeding 1ft x 1ft, from a kit
5. Lego original, "theme of the fair"
6. Any construction type, mechanical, not a kit
7. Any other construction type, non-mechanical, not a kit
8. Lego, over 1ft. in size, not a ldt
9. Lego, over 1ft in size, kits and original combined
10. Diorama scene with action figures



SECTION 5L – 14

DUCT TAPE CHALLENGE

1. Any item made with 80% duct tape, or similar product, one or more colours. One item per exhibitor.



PHOTOGRAPHY

BEST ENTRY PHOTOGRAPHY

Rules and Regulations for entry

- Open to Amateur photography only
- The photographs must be taken by title exhibitor and be suitable for family viewing
- Note: See general rules for entry deadlines, prize money etc.
- One entry per class only
- All pictures must be securely mounted on BLACK mat board no thicker than 1/8"
- All others will be disqualified. This is to make title display area more consistent and easier to hang pictures.
- Snapshots only up to 6"x6" and no smaller than 4"x6"
- Must be willing if need be to sign a disclaimer for photographs with people
- Work of making the prints and mounting need not be the work of the exhibitor
- On the back of each mount in the lower right-hand corner must be printed: class name, and name of exhibitor, prints may be named
- All possible care for the prints will be taken, but the Fall Fair Board will not be held responsible for loss or damage
- The decision of the judges must be that captures or stops motion as its considered final
- Pictures may have been taken previously, but the print must have been made this past year.
- Honourable mentions may be awarded at the discretion of the judge
- All ages may enter all classes unless specified differently but will be judged according to age categories. See General Rules

SCORE CARD FOR PHOTOGRAPHY

Originality 50

Composition, colour..... 30

Technique..... 20

To a total of 100 points

SECTION 5M – 01

1. Photo Story - A series of 3 photos mounted on one mat
2. School Project
3. Panorama camera photo
4. People -any photo with people as the main subject ie: candid, portraits, children
5. Nature -Wild animals and or plants, and other natural phenomena
6. Domestic Animals -Pets and or farm animals including zoo and aquarium animals with or without human interaction
7. Domestic Plants -All plants grown or cultivated by humans ie: flowers, fruit, vegetables
8. Sports - Any photo that captures motion at a sporting event as its main subject
9. Action - Any photo that captures or stops motion as its main subject
10. Landscape/Seascape - Any photo that includes mountains, meadows, fields, and trees
11. Sunrise/Sunsets/Skies/Moons - Any photo with dramatic clouds and coloured skies, rainbows, captivated horizons, the moons etc.
12. Abstract - Any abstract photo is left to the imagination, a subject as it would appear naturally, but depicts that subject through shape, form, colour, texture and pattern. Computer enhancement is permissible.
13. Macro/Closeup - Any subject matter up close, usually of very small subjects. The finished photograph of the subject is greater than life size
14. Black and White/Monochrome - Any subject that has been photographed or post processed in black and white sepia or monochrome tones
15. Still Life
16. City Scape
17. Photographic representation of our community, incorporating many colours
18. Any other

SECTION 5M – 02

ENLARGEMENTS

Over 6"x6" to a maximum of 8"x10"

- The same rules and classes as Section 5M-01

SECTION 5N – 01 AMATEUR ART

Rules and Regulations

- Copies of other paintings, commercial photography, calendars etc. will not be accepted.
- All art must be ready to hang, or it will be disqualified, no exceptions.
- All pictures including frames are not to exceed 40" in dimension or to be smaller than 8" in dimension.
- All pictures are to be suitably mounted or framed.
- Framed pictures must have wire and screw eye fittings, and the wire drawn tightly across the back of the pictures to have a hanger attached.
- The Fall Fair Board will take all possible care of entries, but will not be responsible for loss or damage.
- No previous entries in the Alberni District Fall Fair will be received or exhibited.
- Due to limited space the number of entries allowed each exhibitor may have to be curtailed.

SCORE CARD FOR ART

Originality	50
Composition, colour	30
Technique	20
Total points	100

1. Alcohol Ink
2. Watercolors
3. Oils
4. Acrylics
5. Charcoal, and pastels
6. Illustrations, cartoons, etc.
7. Pencil
8. Ethnic Art
9. Finger painting
10. Crayon or pencil crayon drawing
11. Pen or ink
12. Brushed painting
13. Felt tipped pen
14. Calligraphy
15. Prints -lithograph, woodcuts, potato etc.
16. Collage
17. School project
18. "Theme of the Fair" any media
19. Mixed media
20. Picture from "Paint Night" Event
21. Coloured page from colouring book
22. Any other

FALL FAIR PLAQUES, GIFT CERTIFICATES AND SPECIAL PRIZES

- Most Points in Livestock
- Best Pig
- Most Points in Sheep
- Best Rabbits
- Most Points in Poultry
- Most Points in Pre-Juniors
- Most Points in Juniors
- Most Points in Pre-Teens
- Most Points in Teens
- Most Points in Fruits
- Most Points in Floriculture
- Most Points in Dahlias
- Joan Drinkwater Memorial for Vegetables
- Most Points in Cut Flowers
- Most Points in Home Cooking
- Most Points in Canning
- Most Points in Wine & Beer
- Most Points in Needlecraft
- Best Entry in 5K Quilting
- Most Points Woodcraft
- Best Painted Object
- Best Entry Photography
- Best Entry in Amateur Art



FALL FAIR AWARDS AND SPECIAL PRIZES

- Exhibitors with lots of entries in the Open non-livestock sections can be eligible for two special prizes.
- The most entries - \$30.00
- Almost as many entries - \$20.00
- Exhibitors must enter at least two sections to be eligible.

